



AUTORADIO

150 - 500

RADIO - DESCRIPTION

The vehicle is equipped with a radio system comprising:

- radio (with CD / MP3 player);
- 2 mid-woofer front speakers located in the doors;
- 2 tweeters located in the front pillars near the rear view mirror triangles;
- 2 full-range rear speakers located in the rear side panels;
- cables connecting the radio with the speakers;
- aerial with support fitted at the rear of the roof with a coaxial connecting cable.

In this configuration the radio is a CAN node through which information is exchanged with the Body Computer and with the other electronic units.

The radio is equipped with an anti-theft system through the connection of the radio at the CAN with the Body Computer; it also manages the volume control linked to the vehicle speed: the volume increases and decreases in relation to the speed of the vehicle.

Some versions are equipped with a series of buttons on the steering wheel: these make it possible to replicate some of the commands which are acquired in the same way by the actual radio.

The following functions are present on the steering wheel:

- change/preset CD track or radio station (forward);
- change/preset CD track or radio station (backward);
- SCR (switch audio source);
- VOL+ (increase volume);
- VOL- (decrease volume);
- MUTE.

On versions with Bluetooth and Blue&Me (with navigation with maps) the controls on the steering have 8 buttons.

The radio is an integral part of the radio phone and navigation system.

See E3570 INTEGRATED RADIO PHONE

See E4090 NAVIGATOR

For more details,

See descriptions 5570 ACCESSORIES

RADIO - FUNCTIONAL DESCRIPTION

The radio P020 (pin A4 of connector A) receives a supply directly from the battery via the line protected by fuse F36 of the Body Computer M001 (pin 12 of connector E).

Pin A8 of connector A of P020 is connected to the driver's dashboard earth C015.

The radio P020 (pins A1 and A3 of connector A) is connected via the B-CAN to the Body Computer (pins 22 and 17 of connector D) and to the other system nodes.

The radio aerial P025 (or, on versions with Blue&Me, the triple function aerial P110) is connected by a dedicated coaxial cable to connector C of P020.

Connector A of the radio P020 is also connected to the speakers:

- from pins B5 (+) and B6 (-) to driver's front speakers P035 (mid-woofer) and P045 (tweeter);
- pins B3 (+) and B4 (-) to passenger side front speakers P036 (mid-woofer) and P046 (tweeter);
- pins B7 (+) and B8 (-) to the left rear speaker P030 (full-range);
- pins B1 (+) and B2 (-) to the right rear speaker P031 (full-range).

The Body Computer M001 is connected to the radio controls on the steering wheel via the clock spring D047. Specifically:

- at pin 6 of D047 the reference earth signal from pin 35 of connector D of M001 is received;
- the signal is sent, from pin 4 of D047, for the MUTE, VOL+ and VOL- controls (located to the left of the steering wheel) to pin 50 of connector D of M001;
- the signal is sent, from pin 3 of D047, for the SOURCE, SCAN+ and SCAN- controls (located to the right of the steering wheel) to pin 52 of connector D of M001.

On configurations with Bluetooth and Blue&Me, connector B of P020 is connected to the Convergence control unit M162.

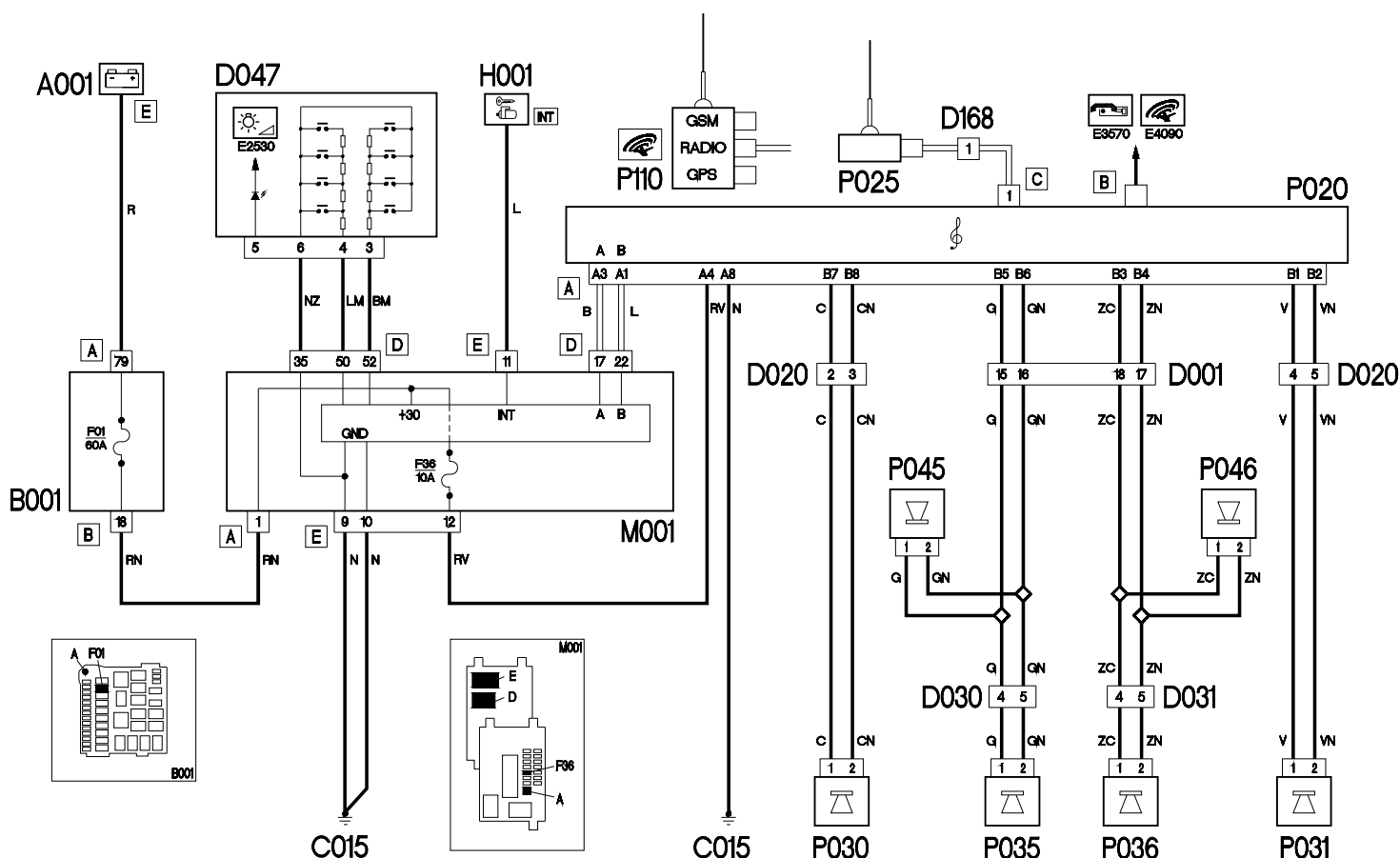
See E3570 INTEGRATED RADIO PHONE

See E4090 NAVIGATOR

The Body Computer M001 receives a direct battery power supply (pin 1 of connector A) protected by fuse F01 of the engine compartment junction unit B001 (pin 18 of connector B); it also receives an ignition-controlled power supply (INT) at pin 11 of connector E.

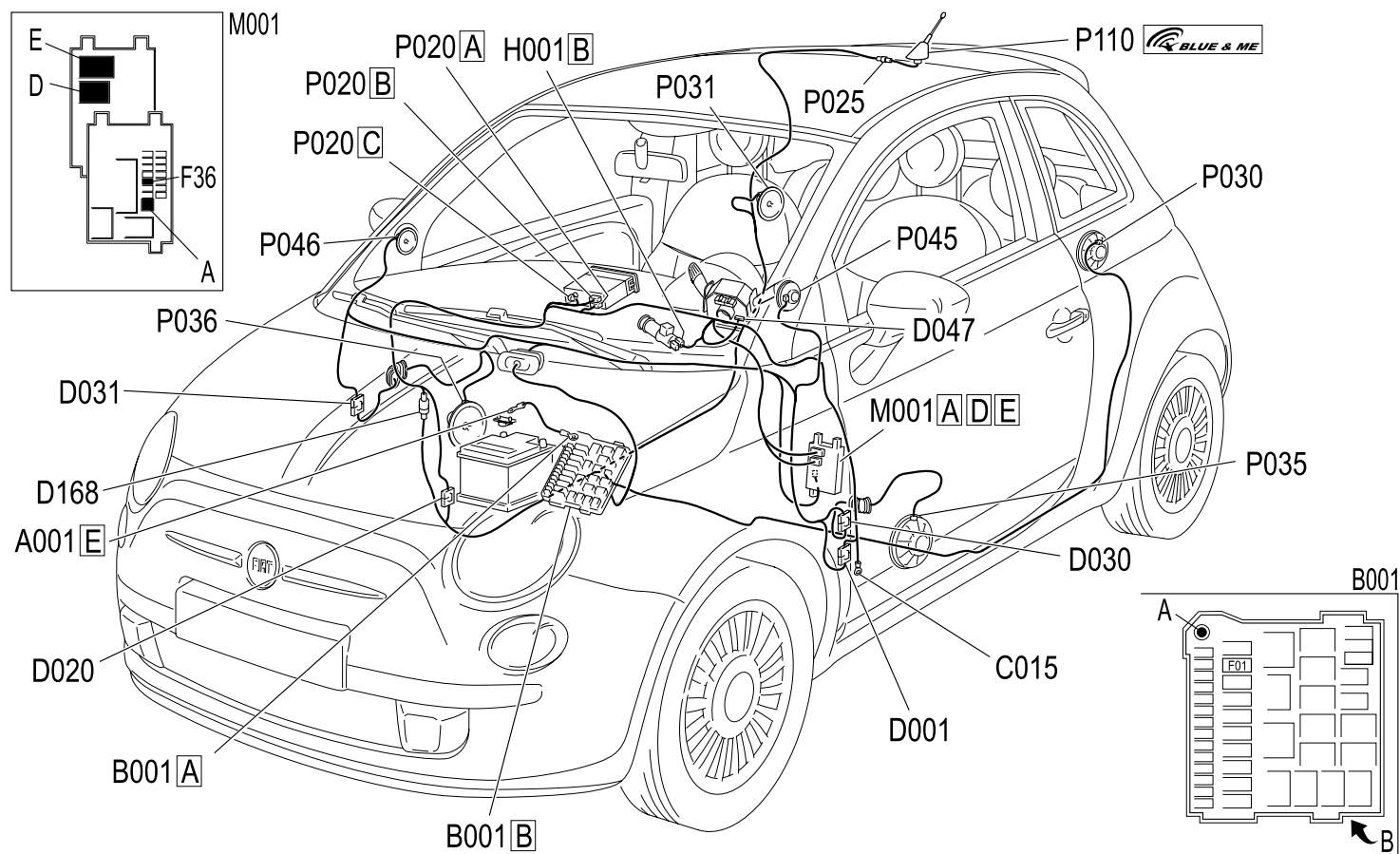
The Body Computer M001 is also connected to the driver's dashboard earth C015 via pins 9 and 10 of connector E.

RADIO - WIRING DIAGRAM



Component code	Description	Reference to the operation
A001	BATTERY	Op. 5530B10 BATTERY - R+R
B001	JUNCTION UNIT	Op. 5505A10 JUNCTION UNIT - R+R
C015	DASHBOARD EARTH, DRIVER'S SIDE	-
D001	FRONT/DASHBOARD COUPLING	-
D020	DASHBOARD/REAR COUPLING	-
D030	LEFT FRONT DOOR COUPLING	-
D031	RIGHT FRONT DOOR COUPLING	-
D047	CLOCK SPRING COUPLING	Op. 5580C12 CLOCK SPRING FOR AIR BAG MODULE ON STEERING WHEEL - R.R
D168	COAXIAL CABLE FOR RADIO AERIAL COUPLING	-
H001	IGNITION SWITCH	Op. 5520A10 IGNITION SWITCH ASSEMBLY - R+R
M001	BODY COMPUTER	Op. 5505A32 BODY COMPUTER - R.R
P020	CAR RADIO	Op. 5570T80 CAR RADIO EQUIPMENT - R+R
P025	AERIAL POWER SUPPLY	Op. 5570T61 MULTI-FUNCTION AERIAL - R.R.
P030	LEFT REAR SPEAKER	Op. 5570T96 REAR SIDE SPEAKER (ONE), LEFT OR RIGHT- R.R
P031	RIGHT REAR SPEAKER	Op. 5570T96 REAR SIDE SPEAKER (ONE), LEFT OR RIGHT- R.R
P035	SPEAKER IN FRONT DOOR LEFT	Op. 5570T91 FRONT SIDE SPEAKER (ONE), LEFT OR RIGHT - R.R. WITH DOOR PANEL REMOVED
P036	SPEAKER ON PASSENGER FRONT DOOR	Op. 5570T91 FRONT SIDE SPEAKER (ONE), LEFT OR RIGHT - R.R. WITH DOOR PANEL REMOVED
P045	DRIVER'S FRONT TWEETER SPEAKER	Op. 5570T92 FRONT TWEETER (ONE), LEFT OR RIGHT - R.R
P046	PASSENGER SIDE FRONT TWEETER SPEAKER	Op. 5570T92 FRONT TWEETER (ONE), LEFT OR RIGHT - R.R
P110	GPS/GSM AERIAL	Op. 5570T61 MULTI-FUNCTION AERIAL - R.R.

RADIO - COMPONENT LOCATION



Component code	Description	Reference to the operation
A001	BATTERY	Op. 5530B10 BATTERY - R+R
B001	JUNCTION UNIT	Op. 5505A10 JUNCTION UNIT - R+R
C015	DASHBOARD EARTH, DRIVER'S SIDE	-
D001	FRONT/DASHBOARD COUPLING	-
D020	DASHBOARD/REAR COUPLING	-
D030	LEFT FRONT DOOR COUPLING	-
D031	RIGHT FRONT DOOR COUPLING	-
D047	CLOCK SPRING COUPLING	Op. 5580C12 CLOCK SPRING FOR AIR BAG MODULE ON STEERING WHEEL - R.R
D168	COAXIAL CABLE FOR RADIO AERIAL COUPLING	-
H001	IGNITION SWITCH	Op. 5520A10 IGNITION SWITCH ASSEMBLY - R+R
M001	BODY COMPUTER	Op. 5505A32 BODY COMPUTER - R.R
P020	CAR RADIO	Op. 5570T80 CAR RADIO EQUIPMENT - R+R
P025	AERIAL POWER SUPPLY	Op. 5570T61 MULTI-FUNCTION AERIAL - R.R.
P030	LEFT REAR SPEAKER	Op. 5570T96 REAR SIDE SPEAKER (ONE), LEFT OR RIGHT- R.R
P031	RIGHT REAR SPEAKER	Op. 5570T96 REAR SIDE SPEAKER (ONE), LEFT OR RIGHT- R.R
P035	SPEAKER IN FRONT DOOR LEFT	Op. 5570T91 FRONT SIDE SPEAKER (ONE), LEFT OR RIGHT - R.R. WITH DOOR PANEL REMOVED
P036	SPEAKER ON PASSENGER FRONT DOOR	Op. 5570T91 FRONT SIDE SPEAKER (ONE), LEFT OR RIGHT - R.R. WITH DOOR PANEL REMOVED
P045	DRIVER'S FRONT TWEETER SPEAKER	Op. 5570T92 FRONT TWEETER (ONE), LEFT OR RIGHT - R.R
P046	PASSENGER SIDE FRONT TWEETER SPEAKER	Op. 5570T92 FRONT TWEETER (ONE), LEFT OR RIGHT - R.R
P110	GPS/GSM AERIAL	Op. 5570T61 MULTI-FUNCTION AERIAL - R.R.