



## REGOLAZIONE SPECCHI RETROVISORI

150 - 500

## REAR VIEW MIRROR ADJUSTMENT - DESCRIPTION

The exterior rear view mirrors can be electrically adjusted in two directions using a button and joystick located in a control panel on the driver's door; a selection cursor makes it possible to choose the left or right mirror.

The button controls two electrical motors located in each of the two exterior mirrors: one motor allows the mirror to rotate along the horizontal axis, the other along the vertical axis.

The adjustment circuit of the exterior mirrors receives an ignition-controlled power supply via a line protected by a fuse for the Body Computer.

An interior electrochromic mirror is available, on request, with an automatic anti-dazzle function. The electrochromic function can be activated/deactivated by pressing the ON/OFF button located on the actual mirror. An LED on the mirror shows that this function is activated.

When reverse gear is engaged the mirror is always in the daytime mode, making manoeuvring easier.

The interior electrochromic mirror also receives an ignition-controlled power supply via a line protected by a fuse for the Body Computer.

## REAR VIEW MIRROR ADJUSTMENT - DESCRIPTION OF OPERATION

Adjustable mirror control unit H030 incorporates the joystick and the control switch for the exterior rear view mirrors.

Control unit H030 receives an ignition-controlled power supply (INT), at pin 7, from the line protected by fuse F51 of Body Computer M001 (pin 8 of connector C). Pin 5 of H030 is connected to left front earth C010.

Control unit H030 operates the adjustment motors inside the driver side P060 and passenger side P061 mirrors by combining the above signals. Specifically:

- from pin 6 it provides the joint signal for the motors of both mirrors (pin 5 of P060 and P061);
- from pins 1 and 2 it controls the movement of P060 and P061 respectively (pin 4) along the vertical axis;
- from pins 3 and 4 it controls the movement of P060 and P061 respectively (pin 3) along the horizontal axis.

Pin 8 of H030 receives the power supply for the internal lighting of the mirror adjustment control.

See E2530 INSTRUMENT LIGHTING

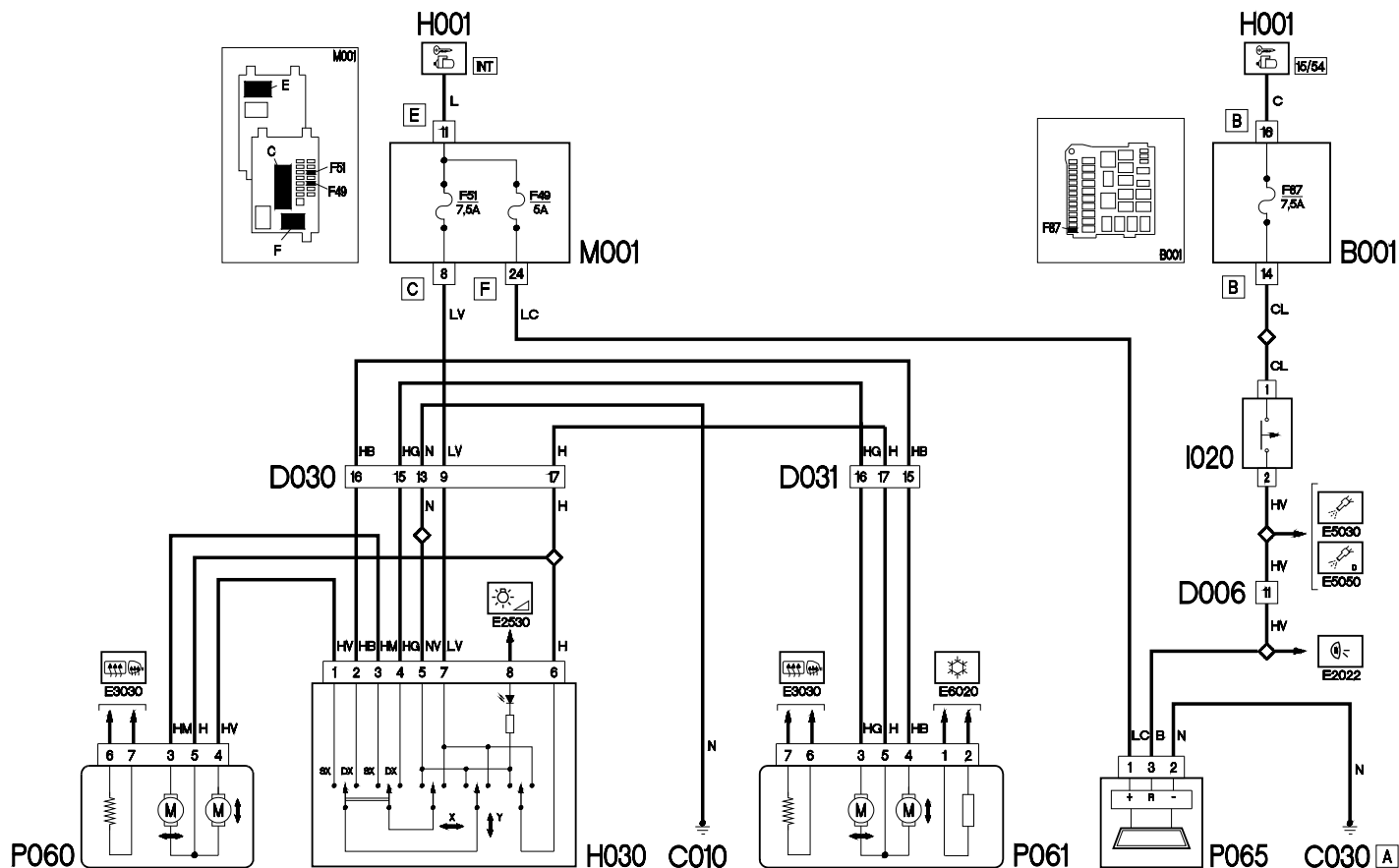
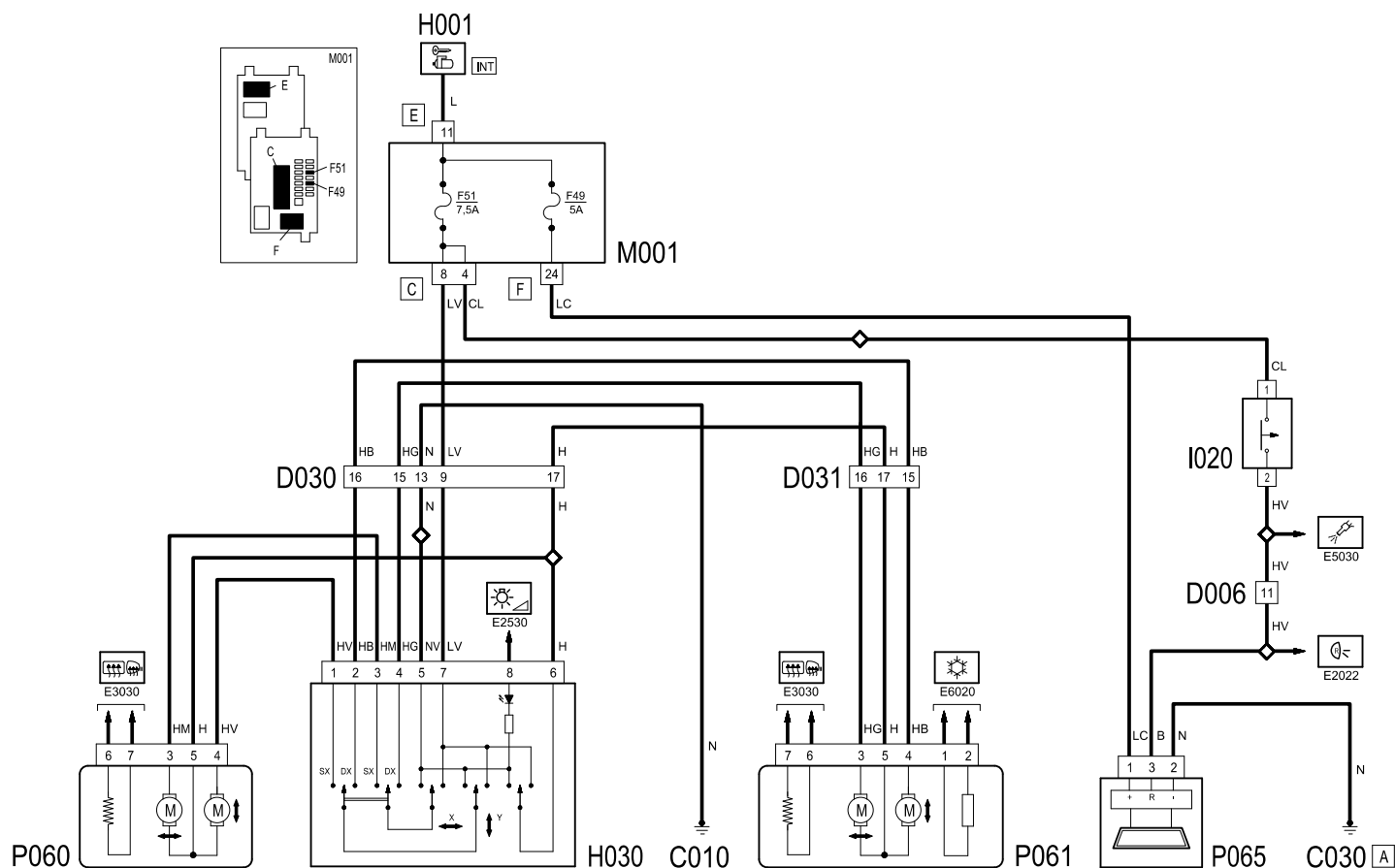
Electrochromic interior mirror P065 receives an ignition-controlled supply (INT), at pin 1, from the line protected by fuse F49 of Body Computer M001 (pin 24 of connector F). Pin 2 is connected to left rear earth C030.

Reversing lights switch I020 receives an ignition-operated power supply (15/54) through a line protected by fuse F87 of engine compartment junction unit B001 (pin 14 of connector B).

On versions with a START&STOP device, reversing lights switch I020 receives a power supply from the ignition-controlled line (INT) protected by fuse F51 of Body Computer M001 (pin 4 of connector C).

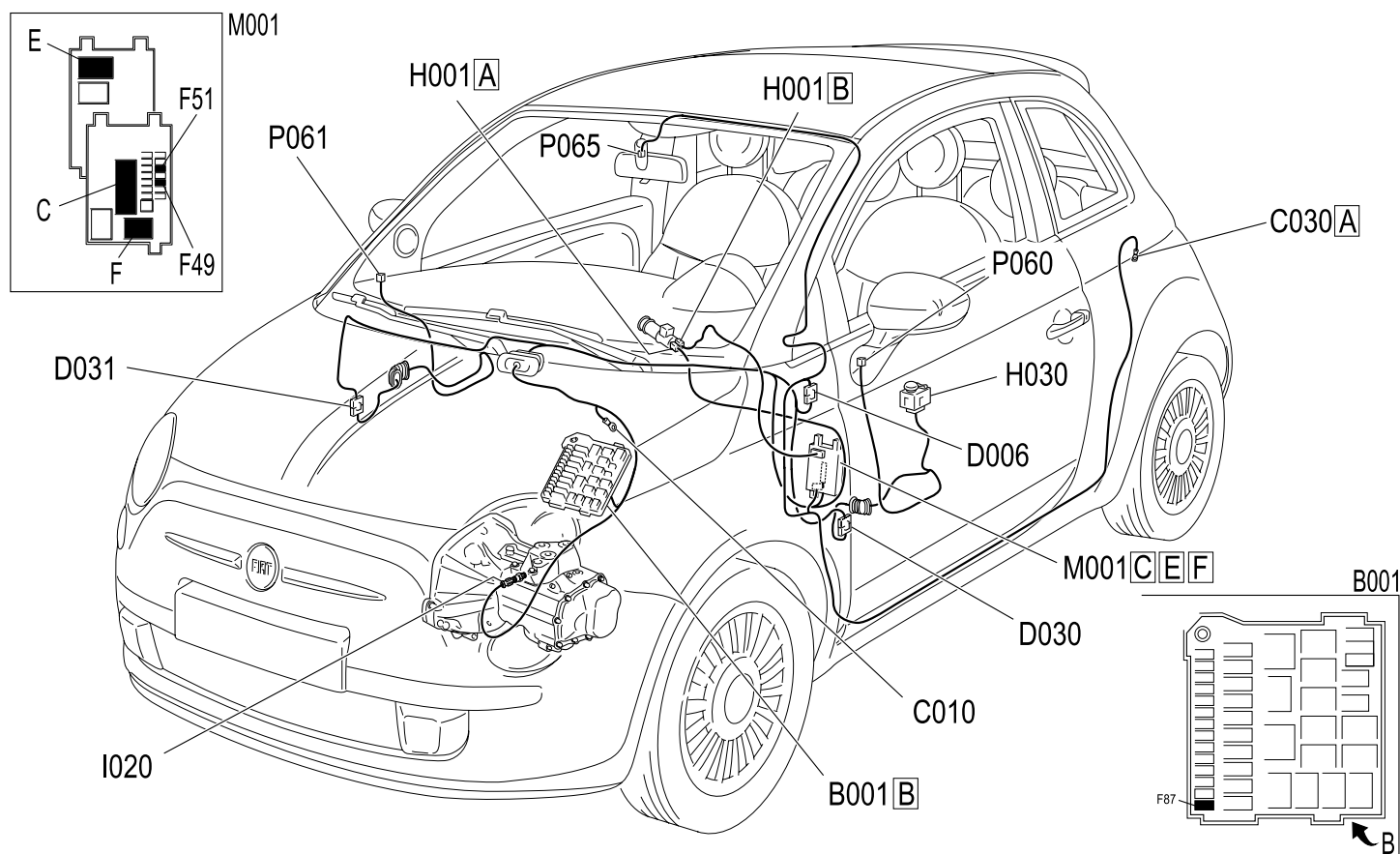
When reverse gear is engaged the switch closes and sends the control signal to pin 3 of electrochromic mirror P065.

# REAR VIEW MIRROR ADJUSTMENT - WIRING DIAGRAM



Component code	Description	Reference to the operation
B001	JUNCTION UNIT	Op. 5505A10 JUNCTION UNIT - R+R
C010	LEFT FRONT EARTH	-
C030	LEFT REAR EARTH	-
D006	FRONT/REAR COUPLING	-
D030	LEFT FRONT DOOR COUPLING	-
D031	RIGHT FRONT DOOR COUPLING	-
H001	IGNITION SWITCH	Op. 5520A10 IGNITION SWITCH ASSEMBLY - R+R
H030	ADJUSTABLE MIRRORS CONTROL	Op. 7005R40 REAR VIEW/DOOR MIRROR(S) POSITIONING SWITCH UNIT - R.R.
I020	REVERSING LIGHTS SWITCH	Op. 5550D22 REVERSING LIGHT SWITCH - R+R
M001	BODY COMPUTER	Op. 5505A32 BODY COMPUTER - R.R.
P060	DRIVER'S DOOR MIRROR	Op. 7005R30 ELECTRICALLY CONTROLLED DOOR MIRROR (ONE) - R+R
P061	PASSENGER DOOR MIRROR	Op. 7005R30 ELECTRICALLY CONTROLLED DOOR MIRROR (ONE) - R+R
P065	ELECTRO-CHROMIC INTERIOR REAR VIEW MIRROR	-

# REAR VIEW MIRROR ADJUSTMENT - LOCATION OF COMPONENTS



Component code	Description	Reference to the operation
B001	JUNCTION UNIT	Op. 5505A10 JUNCTION UNIT - R+R
C010	LEFT FRONT EARTH	-
C030	LEFT REAR EARTH	-
D006	FRONT/REAR COUPLING	-
D030	LEFT FRONT DOOR COUPLING	-
D031	RIGHT FRONT DOOR COUPLING	-
H001	IGNITION SWITCH	Op. 5520A10 IGNITION SWITCH ASSEMBLY - R+R
H030	ADJUSTABLE MIRRORS CONTROL	Op. 7005R40 REAR VIEW/DOOR MIRROR(S) POSITIONING SWITCH UNIT - R.R.
I020	REVERSING LIGHTS SWITCH	Op. 5550D22 REVERSING LIGHT SWITCH - R+R
M001	BODY COMPUTER	Op. 5505A32 BODY COMPUTER - R.R.
P060	DRIVER'S DOOR MIRROR	Op. 7005R30 ELECTRICALLY CONTROLLED DOOR MIRROR (ONE) - R+R
P061	PASSENGER DOOR MIRROR	Op. 7005R30 ELECTRICALLY CONTROLLED DOOR MIRROR (ONE) - R+R
P065	ELECTRO-CHROMIC INTERIOR REAR VIEW MIRROR	-