

707 - OUTER ACCESSORIES

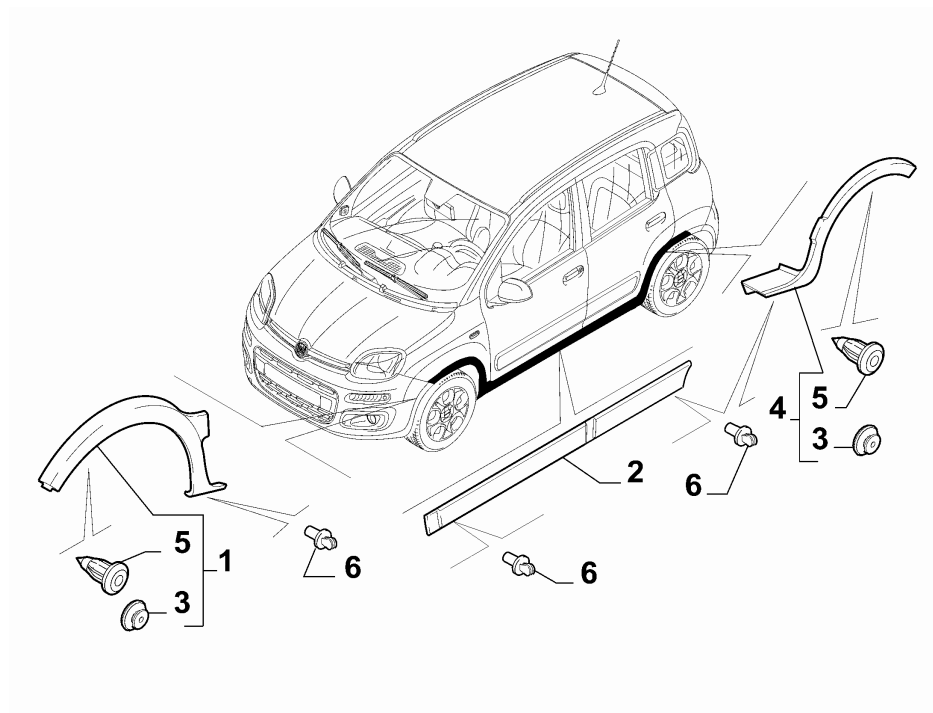


| Table | Description | Page |
|----------|---|------|
| 70712/10 | OUTER TRIM MOULDINGS | 890 |
| 70712/30 | OUTER TRIM MOULDINGS | 891 |
| 70712/50 | OUTER TRIM MOULDINGS | 892 |
| 70712/60 | OUTER TRIM MOULDINGS | 893 |
| 70715/10 | TYPE PLATE | 894 |
| 70717/10 | AIR FILTERS AND LIDS | 896 |
| 70717/30 | AIR FILTERS AND LIDS | 898 |
| 70717/40 | AIR FILTERS AND LIDS | 899 |
| 70723/10 | GUARDS | 900 |
| 70723/20 | GUARDS | 902 |
| 70726/10 | FRONT BUMPER | 903 |
| 70726/20 | FRONT BUMPER | 906 |
| 70726/30 | FRONT BUMPER | 908 |
| 70727/10 | REAR BUMPER | 909 |
| 70727/20 | REAR BUMPER | 911 |
| 70727/40 | REAR BUMPER | 912 |
| 70732/20 | EXTERNAL ACCESSORIES | 913 |
| 70740/10 | REARVIEW MIRRORS | 914 |
| 70740/20 | REARVIEW MIRRORS | 915 |
| 70743/10 | BOARD DOCUMENTATION | 918 |
| 70743/20 | BOARD DOCUMENTATION | 923 |
| 70743/30 | BOARD DOCUMENTATION | 928 |
| 70750/10 | PRESCRIPTION AND INFORMATION NAME PLATE | 929 |

OUTER ACCESSORIES

70712-010 - OUTER TRIM MOULDINGS - 1

| | |
|---------------|----------------------------------|
| Catalogue | 33 - NUOVA PANDA (2012-....) |
| Group | [707] OUTER ACCESSORIES |
| Table | [70712-010] OUTER TRIM MOULDINGS |
| Variant | 1 |
| Revision | 0 |
| Modifications | |
| Valid for | LL4,LL5 |



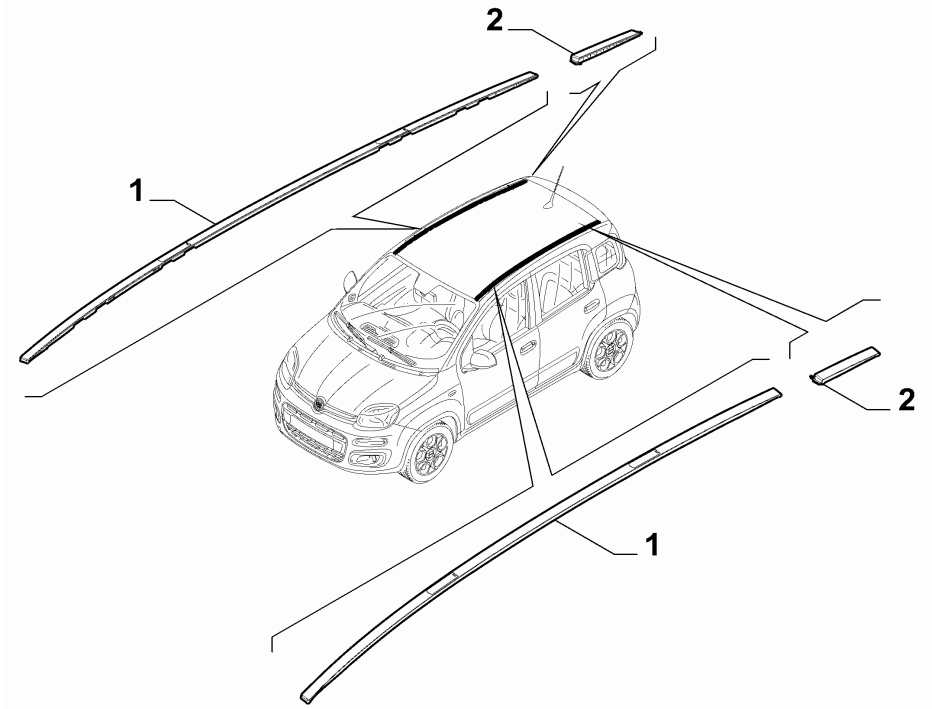
| | Part # | Description | Modification | Compatibility | Notes | Qty | Sub |
|---|-----------|----------------|--------------|----------------|-------|-----|-----|
| 1 | 735536817 | MOULDING RIGHT | | LL4, TC2V, LL5 | | 1 | |
| 1 | 735536818 | MOULDING LEFT | | LL4, TC2V, LL5 | | 1 | |
| 2 | 735536821 | MOULDING RIGHT | | LL4, TC2V, LL5 | | 1 | |
| 2 | 735536820 | MOULDING LEFT | | LL4, TC2V, LL5 | | 1 | |
| 3 | 735558419 | CLIP | | LL4, TC2V, LL5 | | 2 | |
| 4 | 735536819 | MOULDING RIGHT | | LL4, TC2V, LL5 | | 1 | |
| 4 | 735536877 | MOULDING LEFT | | LL4, TC2V, LL5 | | 1 | |
| 5 | 735537083 | CLIP | | LL4, TC2V, LL5 | | 20 | |
| 6 | 51897485 | PIN | | LL4, TC2V, LL5 | | 13 | |

| Legend | Notes |
|--------|---------------------|
| LL4 | TREKKING |
| LL5 | 4X4 |
| TC2V | BN W/ REAR END DOOR |

OUTER ACCESSORIES

70712-030 - OUTER TRIM MOULDINGS - 1

Catalogue 33 - NUOVA PANDA (2012-....)
Group [707] OUTER ACCESSORIES
Table [70712-030] OUTER TRIM MOULDINGS
Variant 1
Revision 0
Modifications
Valid for

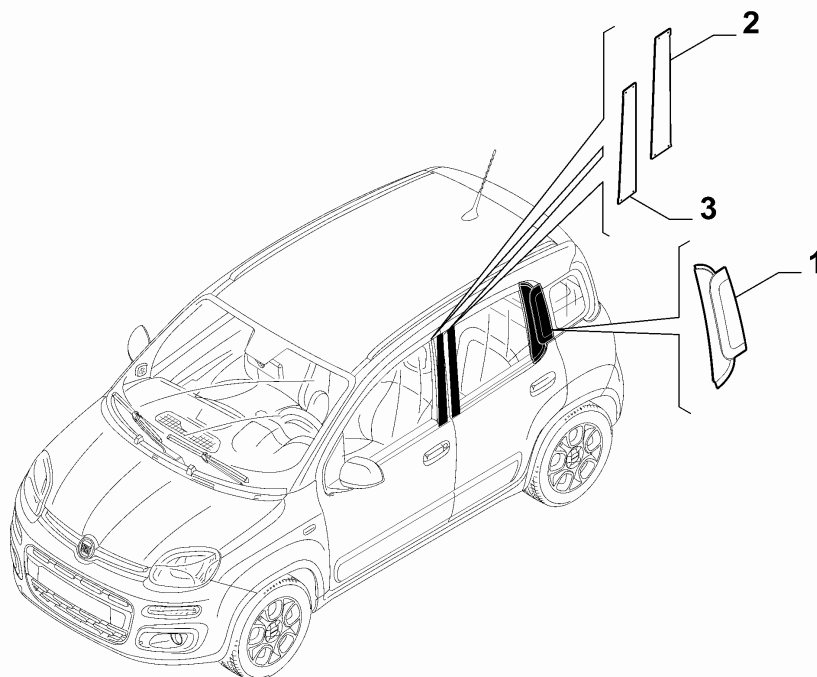


| | Part # | Description | Modification | Compatibility | Notes | Qty | Sub |
|--------|-----------|--------------------------------|--------------|---------------|-------|-----|-----|
| 1 | 735536822 | MOULDING RIGHT | | 400 | | 1 | |
| 1 | 735536823 | MOULDING LEFT | | 400 | | 1 | |
| 2 | 735537070 | MOULDING RIGHT | | 400 | | 1 | |
| 2 | 735537071 | MOULDING LEFT | | 400 | | 1 | |
| Legend | | Notes | | | | | |
| 400 | | LONG OPENABLE ELECTRIC SUNROOF | | | | | |

OUTER ACCESSORIES

70712-050 - OUTER TRIM MOULDINGS - 1

Catalogue 33 - NUOVA PANDA (2012-....)
 Group [707] OUTER ACCESSORIES
 Table [70712-050] OUTER TRIM MOULDINGS
 Variant 1
 Revision 0
 Modifications
 Valid for



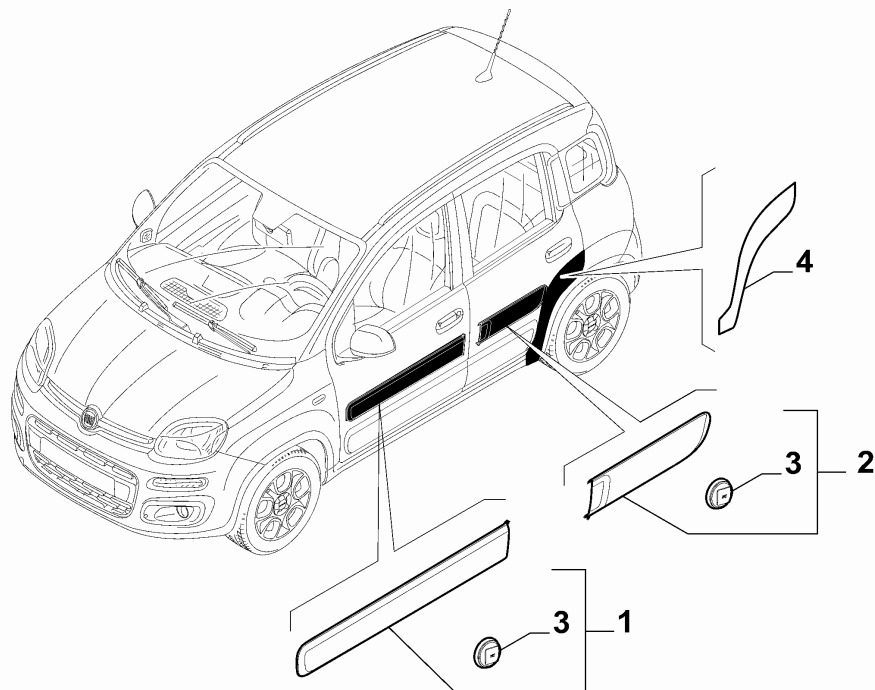
| | Part # | Description | Modification | Compatibility | Notes | Qty | Sub |
|---|-----------|------------------------------|--------------|---------------|-------|-----|-----|
| 1 | 51880615 | MOULDING RIGHT | C17016 | | | 1 | |
| 1 | 51959826 | MOULDING RIGHT | D17016 | | | 1 | |
| 1 | 51880614 | MOULDING LEFT | C17016 | | | 1 | |
| 1 | 51959825 | MOULDING LEFT | D17016 | | | 1 | |
| 2 | 735536878 | MOULDING FRONT SECTION RIGHT | | | | 1 | |
| 2 | 735536766 | MOULDING FRONT SECTION LEFT | | | | 1 | |
| 3 | 735536898 | MOULDING RIGHT | | | | 1 | |
| 3 | 735536897 | MOULDING LEFT | | | | 1 | |

| Legend | Notes |
|--------|---|
| 17016 | new trims and new moldings [DAT 12/07/2013] |

OUTER ACCESSORIES

70712-060 - OUTER TRIM MOULDINGS - 1

Catalogue 33 - NUOVA PANDA (2012-....)
 Group [707] OUTER ACCESSORIES
 Table [70712-060] OUTER TRIM MOULDINGS
 Variant 1
 Revision 0
 Modifications
 Valid for

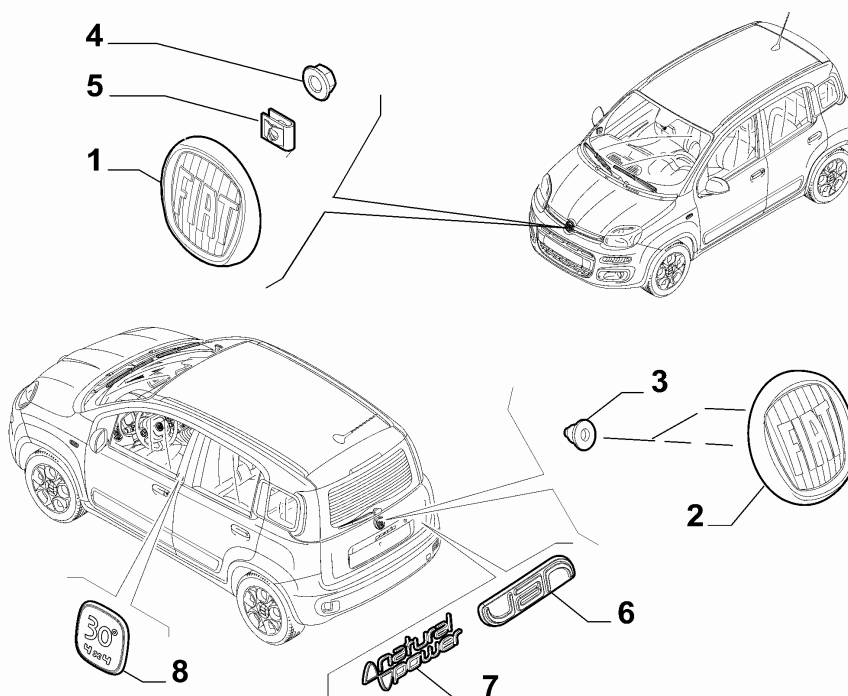


| | Part # | Description | Modification | Compatibility | Notes | Qty | Sub |
|--------|-----------|-----------------------------|--------------|---------------|-------|-----|-----|
| 1 | 735536816 | MOULDING FRONT RIGHT | | 927 | | 1 | |
| 1 | 735536815 | MOULDING FRONT LEFT | | 927 | | 1 | |
| 2 | 735537099 | MOULDING REAR RIGHT | | TT4X2, 927 | | 1 | |
| 2 | 735537082 | MOULDING REAR LEFT | | TT4X2, 927 | | 1 | |
| 2 | 735537101 | MOULDING REAR RIGHT | | TT4X4 | | 1 | |
| 2 | 735537085 | MOULDING REAR LEFT | | TT4X4 | | 1 | |
| 3 | 735537083 | CLIP | | 927 | | 30 | |
| 4 | 51930120 | PROTECTION FILM RIGHT | | 5CJ, 5B2 | | 1 | |
| 4 | 51930121 | PROTECTION FILM LEFT | | 5CJ, 5B2 | | 1 | |
| Legend | | Notes | | | | | |
| 5B2 | | PASTEL PAINT FOR A CHARGE | | | | | |
| 5CJ | | PASTEL PAINT EXTRA SERIES 4 | | | | | |
| 927 | | BUMPER STRIPES | | | | | |
| TT4X2 | | 2 WHEEL DRIVE | | | | | |
| TT4X4 | | 4 DRIVE WHEELS | | | | | |

OUTER ACCESSORIES

70715-010 - TYPE PLATE - 1

Catalogue 33 - NUOVA PANDA (2012-....)
 Group [707] OUTER ACCESSORIES
 Table [70715-010] TYPE PLATE
 Variant 1
 Revision 0
 Modifications
 Valid for !4EZ



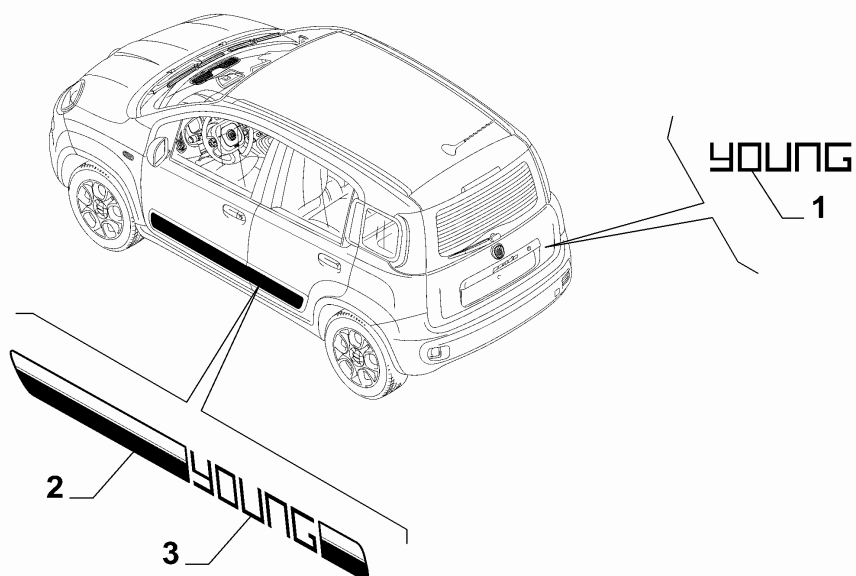
| | Part # | Description | Modification | Compatibility | Notes | Qty | Sub |
|---|-----------|--------------------------|--------------|---------------|-------|-----|-----|
| 1 | 51932710 | MAKE MEDALLION ANTERIORE | | | | 1 | |
| 2 | 735521414 | MAKE MEDALLION REAR | C15391 | | | 1 | |
| 2 | 735565897 | MAKE MEDALLION REAR | D15391 | | | 1 | |
| 3 | 82478063 | BUSH | | | | 2 | |
| 4 | 14059111 | NUT | | | | 1 | |
| 4 | 12578011 | NUT | | | | 1 | |
| 5 | 51932899 | BRACKET | | | | 3 | |
| 6 | 51922239 | TYPE PLATE | | TCVAN | | 1 | |
| 7 | 51879788 | TYPE PLATE | | CMBBM | | 1 | |
| 8 | 51979343 | TYPE PLATE | | 63K | | 1 | |

| Legend | Notes |
|--------|--|
| 15391 | NEW FRONT AND REAR COMPANY NAME [DAT 26/10/2012] |
| 4EZ | SPECIAL SERIES 1 |
| 63K | AESTHETIC KIT 10 |
| CMBBM | PETROL/METHANE |
| TCVAN | VAN |

OUTER ACCESSORIES

70715-010 - TYPE PLATE - 2

Catalogue 33 - NUOVA PANDA (2012-....)
 Group [707] OUTER ACCESSORIES
 Table [70715-010] TYPE PLATE
 Variant 2
 Revision 0
 Modifications
 Valid for 4EZ

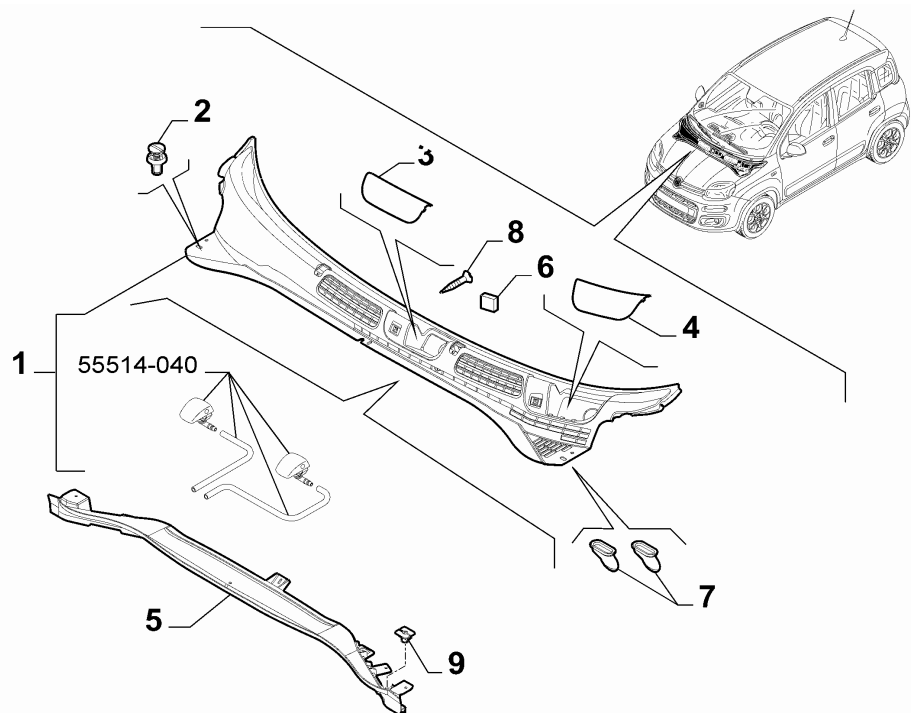


| | Part # | Description | Modification | Compatibility | Notes | Qty | Sub |
|--------|-----------|---------------------|--------------|---------------|-------|-----|-----|
| 1 | 735606813 | ADHESIVE TAPE | | | | 1 | |
| 2 | 735606809 | ADHESIVE TAPE RIGHT | | | | 1 | |
| 2 | 735606810 | ADHESIVE TAPE LEFT | | | | 1 | |
| 3 | 735606811 | ADHESIVE TAPE RIGHT | | | | 1 | |
| 3 | 735606812 | ADHESIVE TAPE LEFT | | | | 1 | |
| Legend | | Notes | | | | | |
| 4EZ | | SPECIAL SERIES 1 | | | | | |

OUTER ACCESSORIES

70717-010 - AIR FILTERS AND LIDS - 1

Catalogue 33 - NUOVA PANDA (2012-....)
 Group [707] OUTER ACCESSORIES
 Table [70717-010] AIR FILTERS AND LIDS
 Variant 1
 Revision 0
 Modifications
 Valid for GSX



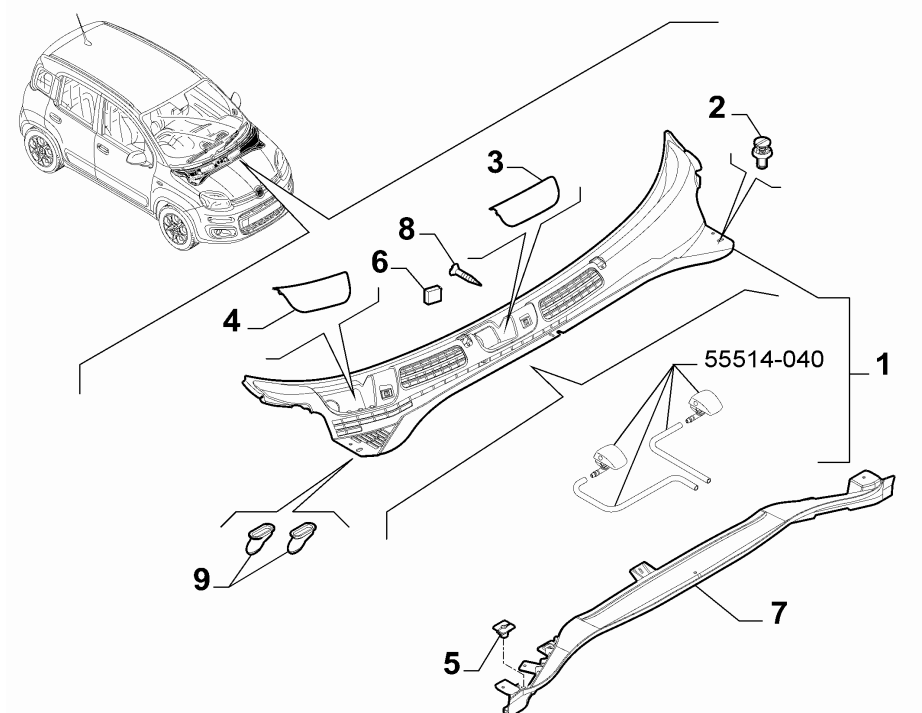
| | Part # | Description | Modification | Compatibility | Notes | Qty | Sub |
|---|-----------|--------------|--------------|---------------|-------|-----|-----|
| 1 | 735536799 | ORNAMENT | | | | 1 | |
| 2 | 51761163 | RIVET | | | | 3 | |
| 3 | 735536804 | PLUG RIGHT | | | | 1 | |
| 4 | 735536814 | PLUG LEFT | | | | 1 | |
| 5 | 51846448 | ORNAMENT | | | | 1 | |
| 6 | 46804345 | WICK | | | | 2 | |
| 7 | 51897813 | SLEEVE | | | | 2 | |
| 8 | 15690807 | SCREW N10X16 | | | | 5 | |
| 9 | 51721582 | BLOCK | | | | 5 | |

| Legend | Notes |
|--------|-------|
| GSX | LEFT |

OUTER ACCESSORIES

70717-010 - AIR FILTERS AND LIDS - 2

Catalogue 33 - NUOVA PANDA (2012-....)
 Group [707] OUTER ACCESSORIES
 Table [70717-010] AIR FILTERS AND LIDS
 Variant 2
 Revision 0
 Modifications
 Valid for GDX



| | Part # | Description | Modification | Compatibility | Notes | Qty | Sub |
|---|-----------|--------------|--------------|---------------|-------|-----|-----|
| 1 | 735536801 | ORNAMENT | | | | 1 | |
| 2 | 51761163 | RIVET | | | | 3 | |
| 3 | 735536803 | PLUG RIGHT | | | | 1 | |
| 4 | 735536813 | PLUG LEFT | | | | 1 | |
| 5 | 51721582 | BLOCK | | | | 5 | |
| 6 | 46804345 | WICK | | | | 2 | |
| 7 | 51846448 | ORNAMENT | | | | 1 | |
| 8 | 15690807 | SCREW N10X16 | | | | 5 | |
| 9 | 51897813 | SLEEVE | | | | 2 | |

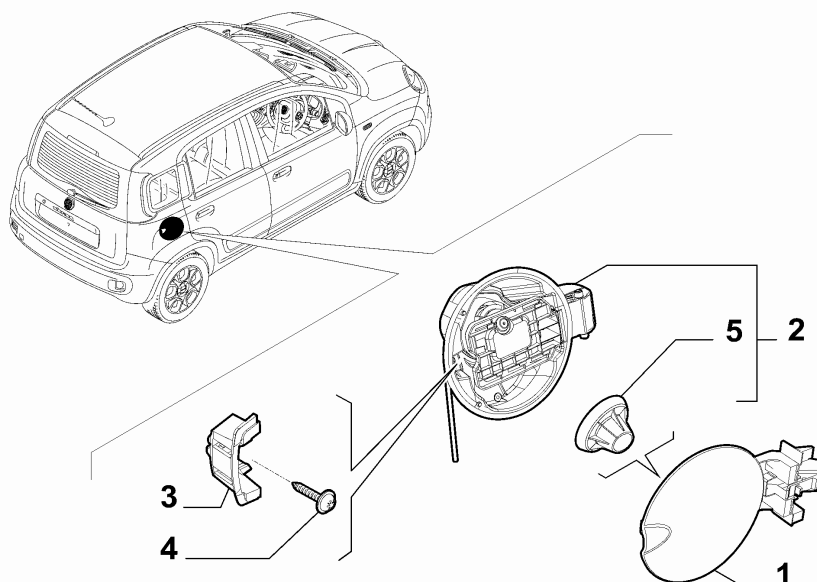
| Legend | Notes |
|--------|-------|
|--------|-------|

GDX RIGHT

OUTER ACCESSORIES

70717-030 - AIR FILTERS AND LIDS - 1

Catalogue 33 - NUOVA PANDA (2012-....)
 Group [707] OUTER ACCESSORIES
 Table [70717-030] AIR FILTERS AND LIDS
 Variant 1
 Revision 0
 Modifications
 Valid for



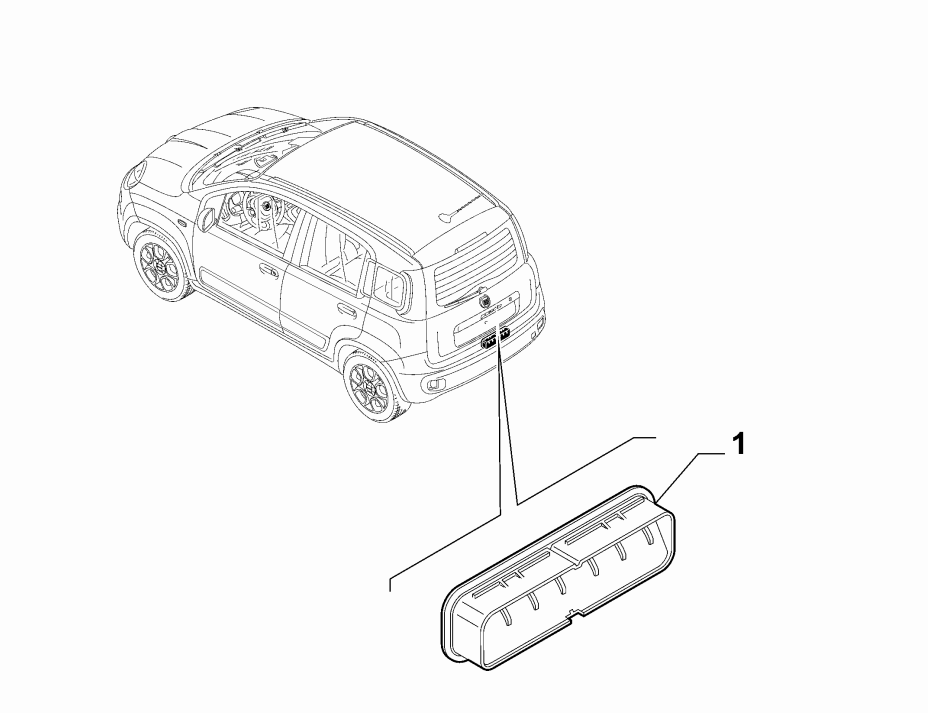
| | Part # | Description | Modification | Compatibility | Notes | Qty | Sub |
|---|----------|---------------|--------------|-----------------|-------|-----|-----|
| 1 | 51896591 | LID | | | | 1 | |
| 2 | 51845962 | END PLATE | | CMBBZ, CMBDS | | 1 | |
| 2 | 51846059 | END PLATE | C17019 | CMBBG | | 1 | |
| 2 | 51950013 | END PLATE | C17019 | CMBBM | | 1 | |
| 2 | 51950013 | END PLATE | D17019 | CMBBM, CMBBG | | 1 | |
| 3 | 51881113 | STRIKER PLATE | | | | 1 | |
| 4 | 16083607 | SCREW | | | | 1 | |
| 5 | 71771490 | BOOT | | | | 1 | |

OUTER ACCESSORIES

| Legend | Notes |
|--------|--|
| 17019 | STANDARDIZATION OF CNG MODEL WITH LPG MODEL [DAT 19/03/2013] |
| CMBBG | GASOLINE / LPG |
| CMBBM | PETROL/METHANE |
| CMBBZ | PETROL |
| CMBDS | DIESEL |

70717-040 - AIR FILTERS AND LIDS - 1

Catalogue 33 - NUOVA PANDA (2012-....)
Group [707] OUTER ACCESSORIES
Table [70717-040] AIR FILTERS AND LIDS
Variant 1
Revision 0
Modifications
Valid for

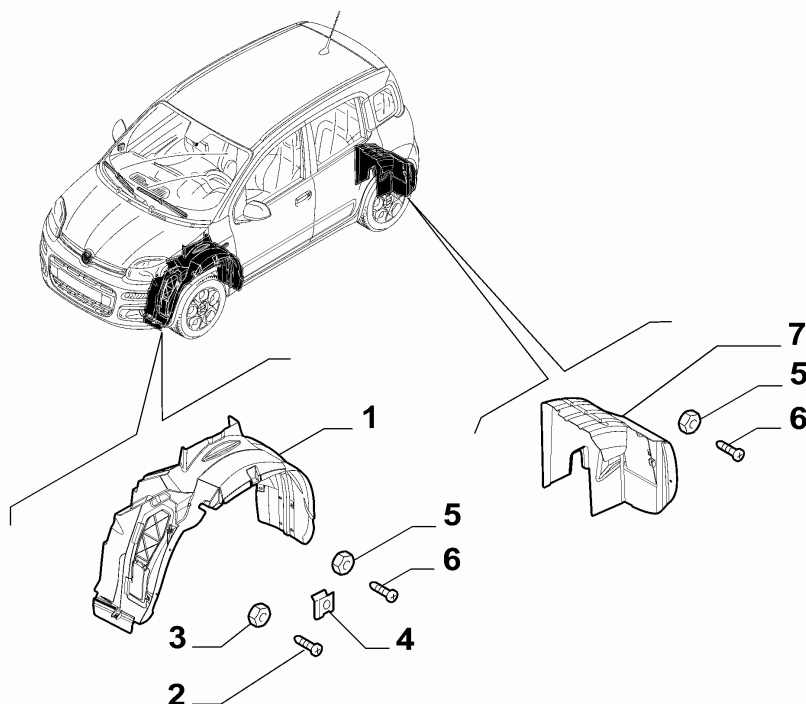


| | Part # | Description | Modification | Compatibility | Notes | Qty | Sub |
|---|----------|-------------|--------------|---------------|-------|-----|-----|
| 1 | 51851260 | ORNAMENT | | | | 1 | |

OUTER ACCESSORIES

70723-010 - GUARDS - 1

Catalogue 33 - NUOVA PANDA (2012-....)
 Group [707] OUTER ACCESSORIES
 Table [70723-010] GUARDS
 Variant 1
 Revision 0
 Modifications
 Valid for



| | Part # | Description | Modification | Compatibility | Notes | Qty | Sub |
|---|----------|------------------|--------------|---|-------|-----|-----|
| 1 | 51965406 | PROTECTION RIGHT | | CMBBZ, CMBDS, CMBBG, LL1, LL2, CMBBZ, LL0 | | 1 | |
| 1 | 51965408 | PROTECTION LEFT | | CMBBZ, CMBDS, CMBBG, LL1, LL2, CMBBZ, LL0 | | 1 | |
| 1 | 51965407 | PROTECTION RIGHT | | LL4, LL5, CMBBM | | 1 | |
| 1 | 51965409 | PROTECTION LEFT | | LL4, LL5, CMBBM | | 1 | |
| 2 | 10706924 | SCREW M6X16 | | | | 2 | |
| 3 | 13046118 | NUT M6 | | | | 2 | |
| 4 | 14201980 | PAD | | | | 2 | |
| 5 | 50504884 | NUT | | | | 2 | |
| 5 | 60502080 | NUT | | | | 2 | |
| 6 | 15690809 | SCREW N10X16 | | | | 10 | |
| 7 | 51965403 | PROTECTION RIGHT | | TC2V, LL0, LL1, LL2 | | 1 | |
| 7 | 51965402 | PROTECTION RIGHT | | LL4, TC2V, LL5 | | 1 | |
| 7 | 51965403 | PROTECTION RIGHT | | TCVAN, TCPAN | | 1 | |
| 7 | 51965405 | PROTECTION LEFT | | TC2V, LL0, LL1, LL2 | | 1 | |
| 7 | 51965404 | PROTECTION LEFT | | LL4, TC2V, LL5 | | 1 | |
| 7 | 51965405 | PROTECTION LEFT | | TCVAN, TCPAN | | 1 | |

| Legend | Notes |
|--------|----------------|
| CMBBG | GASOLINE / LPG |
| CMBBM | PETROL/METHANE |

Continued...

70723-010 - GUARDS - 1

Catalogue

Group

Table

Variant

Revision

Modifications

Valid for

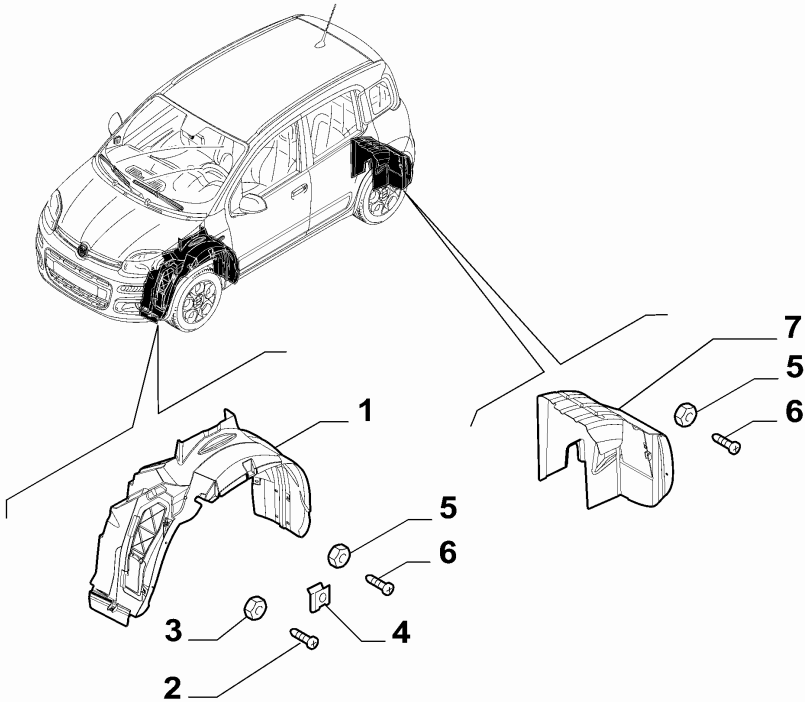
33 - NUOVA PANDA (2012-....)

[707] OUTER ACCESSORIES

[70723-010] GUARDS

1

0

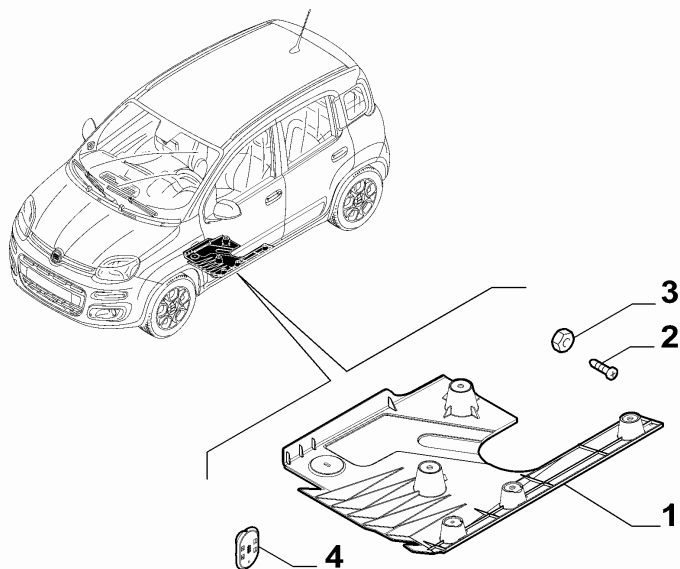


| Legend | Notes |
|--------|---------------------|
| CMBBZ | PETROL |
| CMBDS | DIESEL |
| LL0 | NAKED |
| LL1 | ONE |
| LL2 | EASY |
| LL4 | TREKKING |
| LL5 | 4X4 |
| TC2V | BN W/ REAR END DOOR |
| TCPAN | VIEW |
| TCVAN | VAN |

OUTER ACCESSORIES

70723-020 - GUARDS - 1

Catalogue 33 - NUOVA PANDA (2012-....)
 Group [707] OUTER ACCESSORIES
 Table [70723-020] GUARDS
 Variant 1
 Revision 0
 Modifications
 Valid for

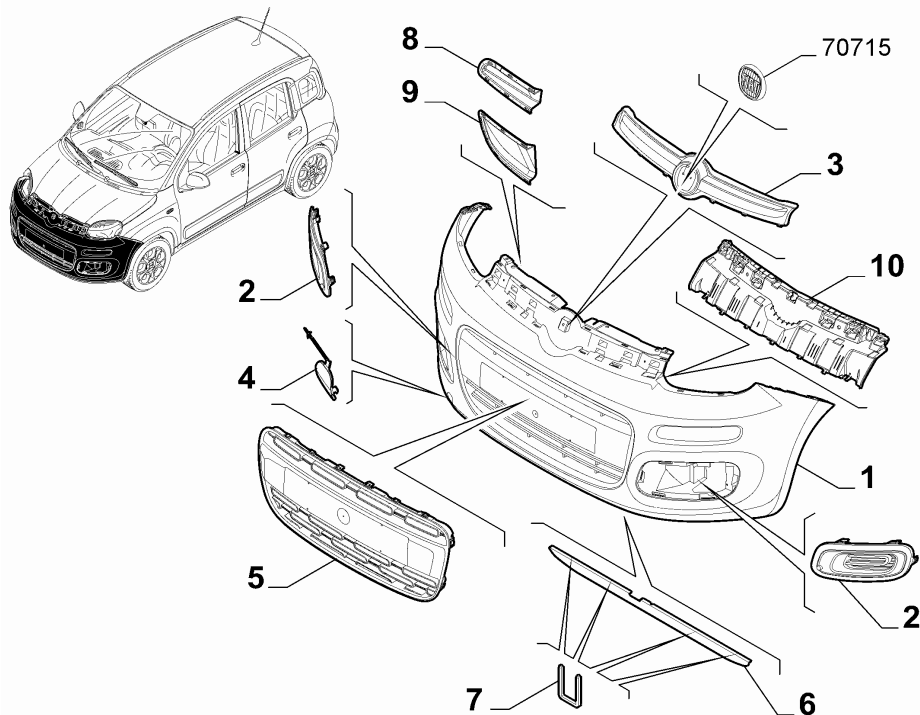


| | Part # | Description | Modification | Compatibility | Notes | Qty | Sub |
|---|----------|------------------|--------------|---------------|-------|-----|-----|
| 1 | 51880617 | PROTECTION RIGHT | | | | 1 | |
| 1 | 51880619 | PROTECTION LEFT | | | | 1 | |
| 2 | 15690807 | SCREW | | | | 2 | |
| 3 | 50504884 | NUT | | | | 10 | |
| 4 | 51828838 | ORNAMENT | | | | 2 | |

OUTER ACCESSORIES

70726-010 - FRONT BUMPER - 1

Catalogue 33 - NUOVA PANDA (2012-....)
 Group [707] OUTER ACCESSORIES
 Table [70726-010] FRONT BUMPER
 Variant 1
 Revision 0
 Modifications
 Valid for LL0,LL1,LL2,TCVAN,TCPAN



| | Part # | Description | Modification | Compatibility | Notes | Qty | Sub |
|--------|-----------|----------------------|--------------|-----------------------------------|--------------------|-----|-----|
| 1 | 73555165 | FRONT BUMPER | | TC2V, TCPAN, 876 | SUPPLIED W/ PRIMER | 1 | |
| 1 | 735537024 | FRONT BUMPER | | TCVAN, 876, LL0 | | 1 | |
| 2 | 735537025 | MOULDING RIGHT | | TC2V, TCPAN, 097 | | 1 | |
| 2 | 735537026 | MOULDING LEFT | | TC2V, TCPAN, 097 | | 1 | |
| 2 | 735537031 | MOULDING RIGHT | | TC2V, TCPAN, 097 | | 1 | |
| 2 | 735537032 | MOULDING LEFT | | TC2V, TCPAN, 097 | | 1 | |
| 3 | 735537029 | ORNAMENT | | | | 1 | |
| 4 | 73555144 | PLUG | | TC2V, TCPAN, 876 | SUPPLIED W/ PRIMER | 1 | |
| 4 | 735537027 | PLUG | | 876 | | 1 | |
| 5 | 735547574 | MOULDING | | TC2V, LL1, □, TC2V, LL2, □, TCPAN | | 1 | |
| 5 | 735547574 | MOULDING | | TCVAN, 876 | | 1 | |
| 6 | 51923089 | SPOILER | | TCPAN, TC2V, TCPAN, CMBBM | | 1 | |
| 6 | 51861057 | SPOILER | | TC2V, TCPAN, CMBBM | | 1 | |
| 7 | 46768065 | CLIP | | | | 12 | |
| 8 | 51884950 | PROTECTION SUPERIORE | | LL0, LL1, LL2 | | 1 | |
| 9 | 51884951 | PROTECTION INFERIORE | | LL0, LL1, LL2 | | 1 | |
| 10 | 51880201 | REINFORCEMENT | | | | 1 | |
| Legend | | Notes | | | | | |

OUTER ACCESSORIES

Continued...

70726-010 - FRONT BUMPER - 1

Catalogue33 - NUOVA PANDA (2012-....)

Group[707] OUTER ACCESSORIES

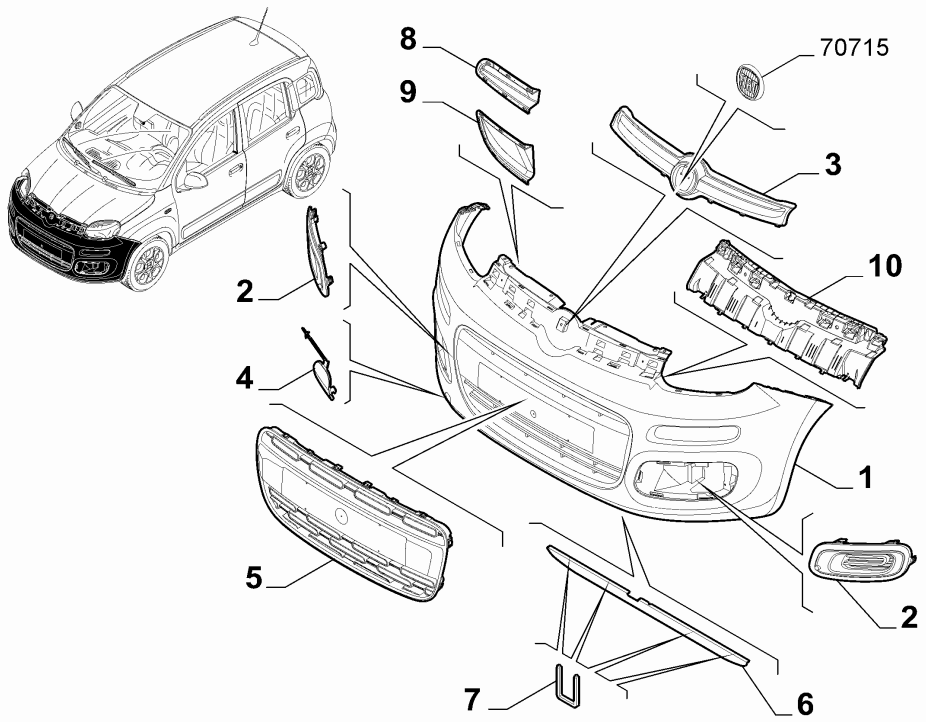
Table[70726-010] FRONT BUMPER

Variant1

Revision0

Modifications

Valid forLL0,LL1,LL2,TCVAN,TCPAN

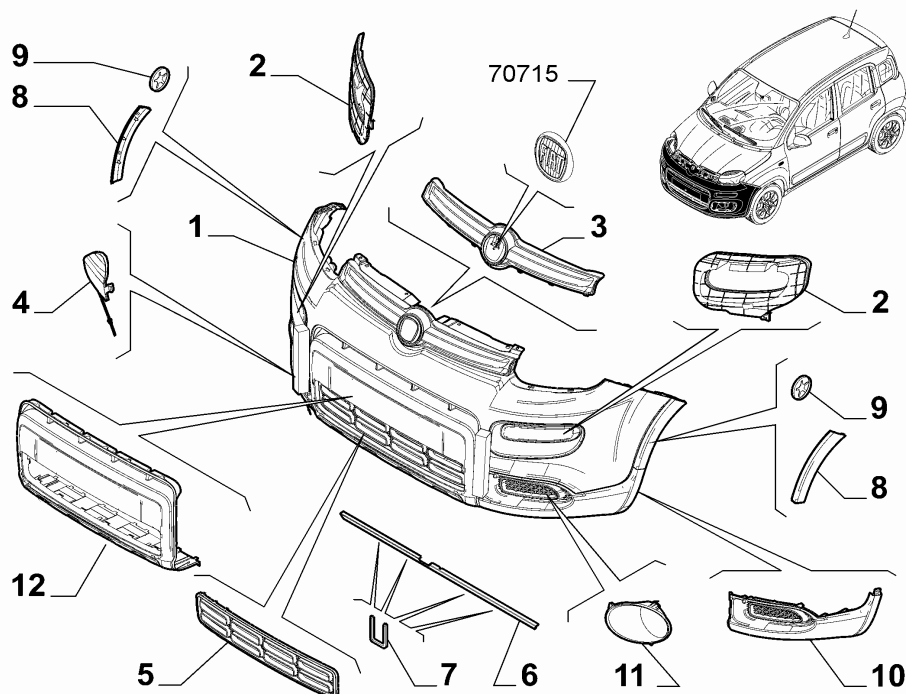


| Legend | Notes |
|--------|---------------------|
| 097 | FOG LIGHT |
| 876 | SPECIFIC BUMPERS |
| CMBBM | PETROL/METHANE |
| LL0 | NAKED |
| LL1 | ONE |
| LL2 | EASY |
| TC2V | BN W/ REAR END DOOR |
| TCPAN | VIEW |
| TCVAN | VAN |

OUTER ACCESSORIES

70726-010 - FRONT BUMPER - 2

Catalogue 33 - NUOVA PANDA (2012-....)
 Group [707] OUTER ACCESSORIES
 Table [70726-010] FRONT BUMPER
 Variant 2
 Revision 0
 Modifications
 Valid for LL4,LL5+ITCVAN+ITCPAN



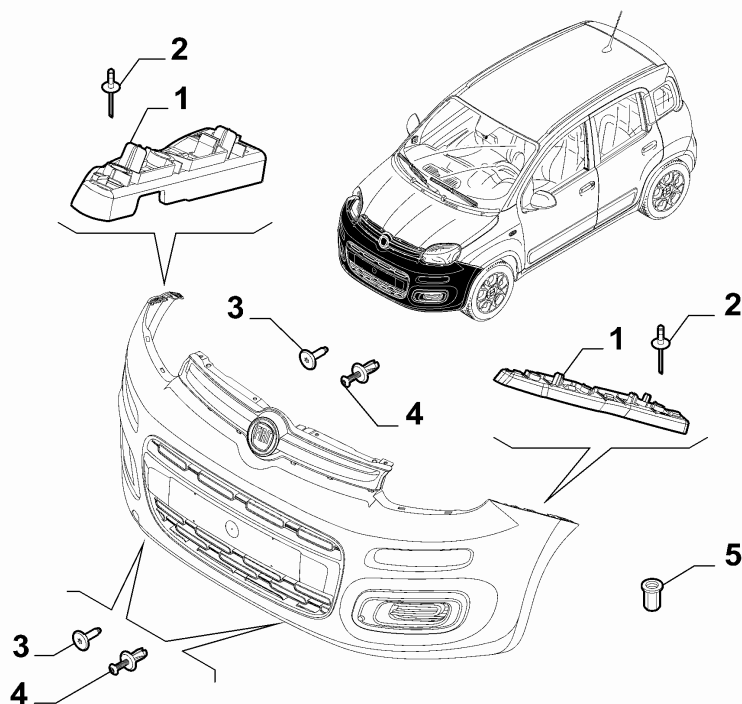
| | Part # | Description | Modification | Compatibility | Notes | Qty | Sub |
|----|-----------|---------------------------|--------------|--------------------|----------------|-----|-----|
| 1 | 96525563 | FRONT BUMPER | | | WITH PRIMER | 1 | |
| 1 | 96525573 | FRONT BUMPER SEMICOMPLETO | | LL5, 097, 7JF | | 1 | |
| 1 | 96525574 | FRONT BUMPER SEMICOMPLETO | | LL5, 097, 7JF | | 1 | |
| 2 | 51880622 | BRACKET RIGHT FOR DRL | | | | 1 | |
| 2 | 51880623 | BRACKET LEFT FOR DRL | | | | 1 | |
| 3 | 735537029 | ORNAMENT | | | | 1 | |
| 4 | 965250350 | PLUG | | | | 1 | |
| 5 | 735547645 | GRILL PRESA ARIA | | | | 1 | |
| 6 | 51861057 | SPOILER | | | | 1 | |
| 7 | 51958482 | CLIP | | | | 12 | |
| 8 | 51880637 | MOULDING RIGHT | | | | 1 | |
| 8 | 51880638 | MOULDING LEFT | | | | 1 | |
| 9 | 51972583 | RETAINER | | | | 6 | |
| 10 | 735547642 | MOULDING RIGHT | | LL4, 097, LL5, 097 | | 1 | |
| 10 | 735547643 | MOULDING LEFT | | LL4, 097, LL5, 097 | | 1 | |
| 10 | 735547673 | MOULDING RIGHT | | LL4, 097, LL5, 097 | | 1 | |
| 10 | 735547674 | MOULDING | | LL4, 097, LL5, 097 | | 1 | |
| 11 | 735547675 | FRAME RIGHT | | LL5 | BRIGHT CHROMED | 1 | |
| 11 | 735547676 | FRAME LEFT | | LL5 | BRIGHT CHROMED | 1 | |
| 12 | 51880639 | MOULDING | | LL4 | | 1 | |
| 12 | 735557268 | MOULDING | | LL5 | | 1 | |

| Legend | Notes |
|--------|--------------------|
| 097 | FOG LIGHT |
| 7JF | PUBLIC AUTHORITIES |
| LL4 | TREKKING |
| LL5 | 4X4 |
| TCPAN | VIEW |
| TCVAN | VAN |

OUTER ACCESSORIES

70726-020 - FRONT BUMPER - 1

Catalogue 33 - NUOVA PANDA (2012-....)
 Group [707] OUTER ACCESSORIES
 Table [70726-020] FRONT BUMPER
 Variant 1
 Revision 0
 Modifications
 Valid for LL1,LL2

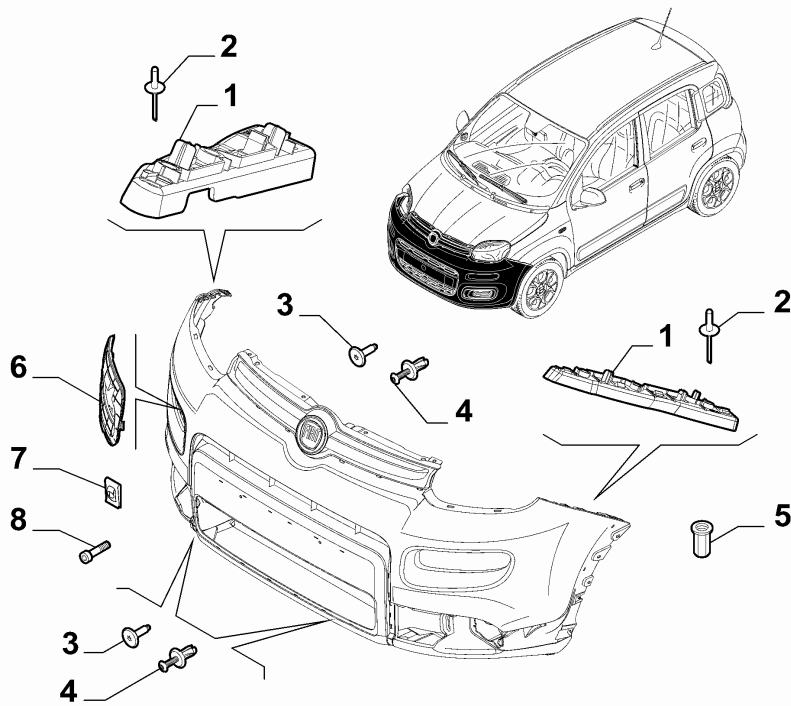


| | Part # | Description | Modification | Compatibility | Notes | Qty | Sub |
|--------|----------|---------------|--------------|---------------|-------|-----|-----|
| 1 | 51880502 | BRACKET RIGHT | | | | 1 | |
| 1 | 51880501 | BRACKET LEFT | | | | 1 | |
| 2 | 51756626 | RIVET | | | | 6 | |
| 3 | 51827981 | SCREW | | | | 4 | |
| 4 | 51877375 | BUTTON | | | | 5 | |
| 5 | 7765139 | RIVET | | | | 2 | |
| Legend | | Notes | | | | | |
| LL1 | | ONE | | | | | |
| LL2 | | EASY | | | | | |

OUTER ACCESSORIES

70726-020 - FRONT BUMPER - 2

| | |
|---------------|------------------------------|
| Catalogue | 33 - NUOVA PANDA (2012-....) |
| Group | [707] OUTER ACCESSORIES |
| Table | [70726-020] FRONT BUMPER |
| Variant | 2 |
| Revision | 0 |
| Modifications | |
| Valid for | LL4,LL5 |



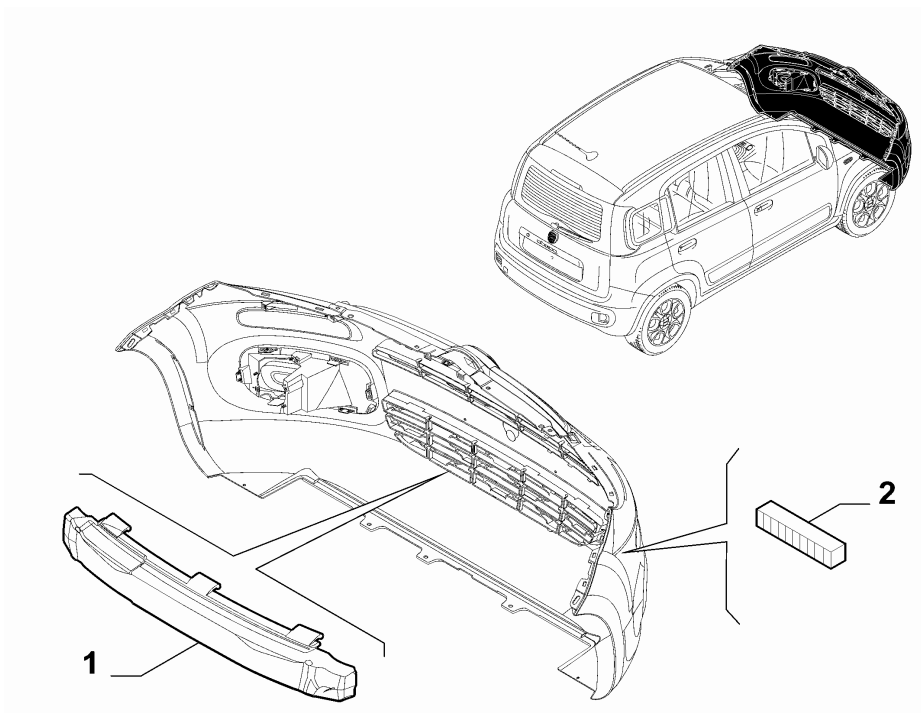
| | Part # | Description | Modification | Compatibility | Notes | Qty | Sub |
|--------|----------|---------------|--------------|----------------|-------|-----|-----|
| 1 | 51880502 | BRACKET RIGHT | | | | 1 | |
| 1 | 51880501 | BRACKET LEFT | | | | 1 | |
| 2 | 51756626 | RIVET | | | | 6 | |
| 3 | 51827981 | SCREW | | | | 4 | |
| 4 | 51877375 | BUTTON | | | | 5 | |
| 5 | 7765139 | RIVET | | | | 2 | |
| 6 | 51880622 | BRACKET | | LL4, TC2V, LL5 | | 1 | |
| 6 | 51880623 | BRACKET | | LL4, TC2V, LL5 | | 1 | |
| 7 | 14368974 | BRACKET | | LL4, TC2V, LL5 | | 6 | |
| 8 | 15690809 | SCREW | | LL4, TC2V, LL5 | | 6 | |
| Legend | | Notes | | | | | |

| | |
|------|---------------------|
| LL4 | TREKKING |
| LL5 | 4X4 |
| TC2V | BN W/ REAR END DOOR |

OUTER ACCESSORIES

70726-030 - FRONT BUMPER - 1

Catalogue 33 - NUOVA PANDA (2012-....)
Group [707] OUTER ACCESSORIES
Table [70726-030] FRONT BUMPER
Variant 1
Revision 0
Modifications
Valid for

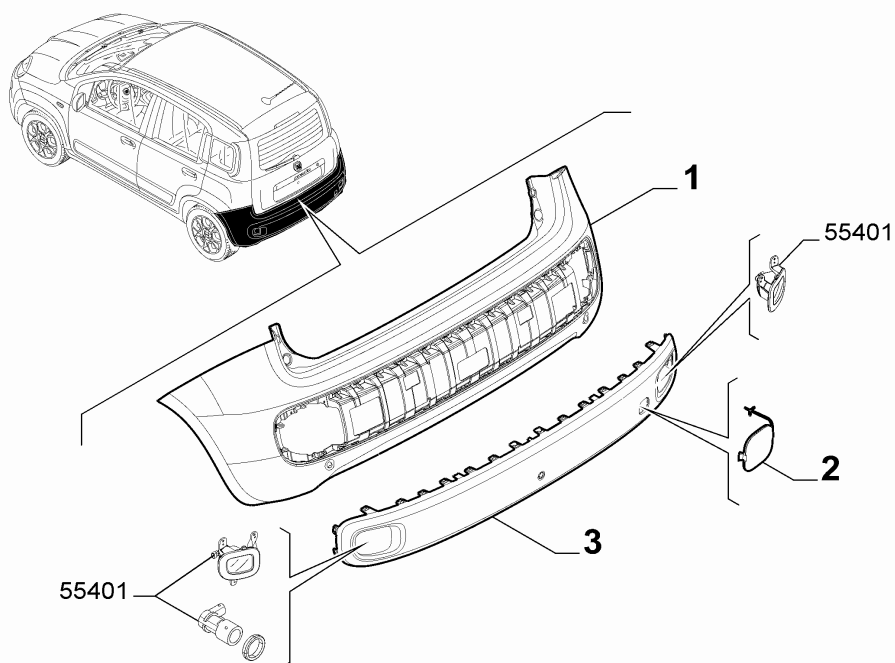


| | Part # | Description | Modification | Compatibility | Notes | Qty | Sub |
|---|----------|---------------------------------|--------------|---------------|-------|-----|-----|
| 1 | 51880504 | WICK | | | | 1 | |
| 2 | 51820774 | WICK ANTI-SCRATCH 250 X 40 X 40 | | | | 4 | |

OUTER ACCESSORIES

70727-010 - REAR BUMPER - 1

Catalogue 33 - NUOVA PANDA (2012-....)
 Group [707] OUTER ACCESSORIES
 Table [70727-010] REAR BUMPER
 Variant 1
 Revision 0
 Modifications
 Valid for LL0,LL1,LL2,TCVAN,TCPAN



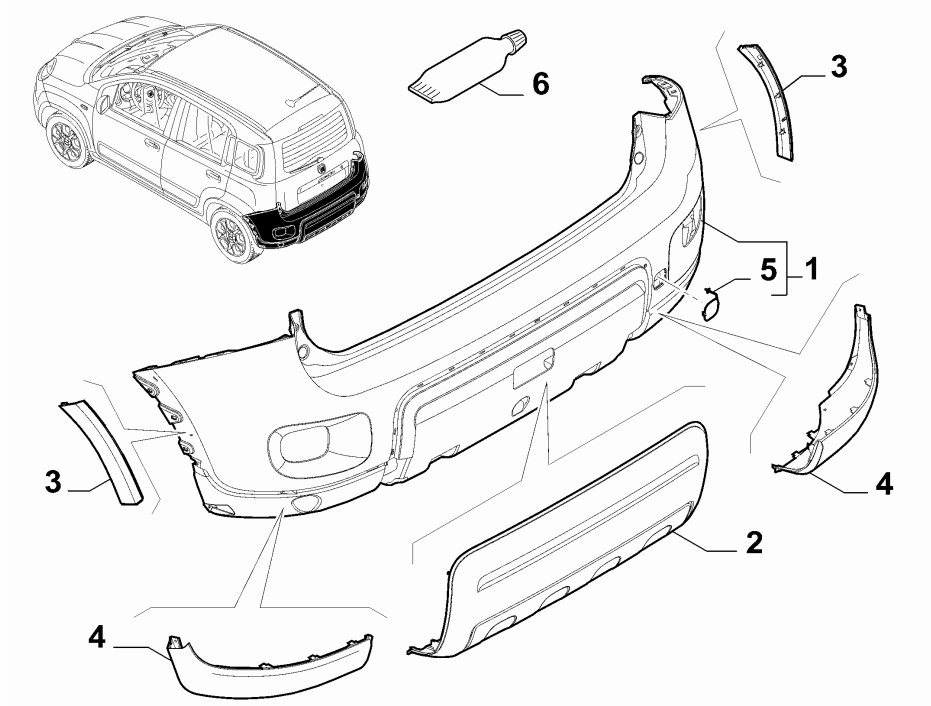
| | Part # | Description | Modification | Compatibility | Notes | Qty | Sub |
|--------|-----------|-------------|--------------|---|--------------------|-----|-----|
| 1 | 735555152 | REAR BUMPER | | TC2V, LL1, 508, TC2V, LL2, 508, TCPAN, 508, 876 | SUPPLIED W/ PRIMER | 1 | |
| 1 | 735555152 | REAR BUMPER | | TCVAN, 508, 876 | | 1 | |
| 1 | 735555151 | REAR BUMPER | | TC2V, LL1, GSX, 508, □, TCPAN, GSX, 508, □, TC2V, GSX, 508, □, TCPAN, 508 | | 1 | |
| 1 | 735537016 | REAR BUMPER | | TCVAN, 508, 876, LL0 | | 1 | |
| 2 | 735537018 | PLUG | | | | 1 | |
| 3 | 735547701 | MOULDING | | 508 | | 1 | |
| 3 | 735547737 | MOULDING | | 508 | | 1 | |
| Legend | | Notes | | | | | |

508 PARKING SENSOR
 876 SPECIFIC BUMPERS
 GSX LEFT
 LL0 NAKED
 LL1 ONE
 LL2 EASY
 TC2V BN W/ REAR END DOOR
 TCPAN VIEW
 TCVAN VAN

OUTER ACCESSORIES

70727-010 - REAR BUMPER - 2

Catalogue 33 - NUOVA PANDA (2012-....)
 Group [707] OUTER ACCESSORIES
 Table [70727-010] REAR BUMPER
 Variant 2
 Revision 0
 Modifications
 Valid for LL4,LL5,!TCVAN,!TCPAN



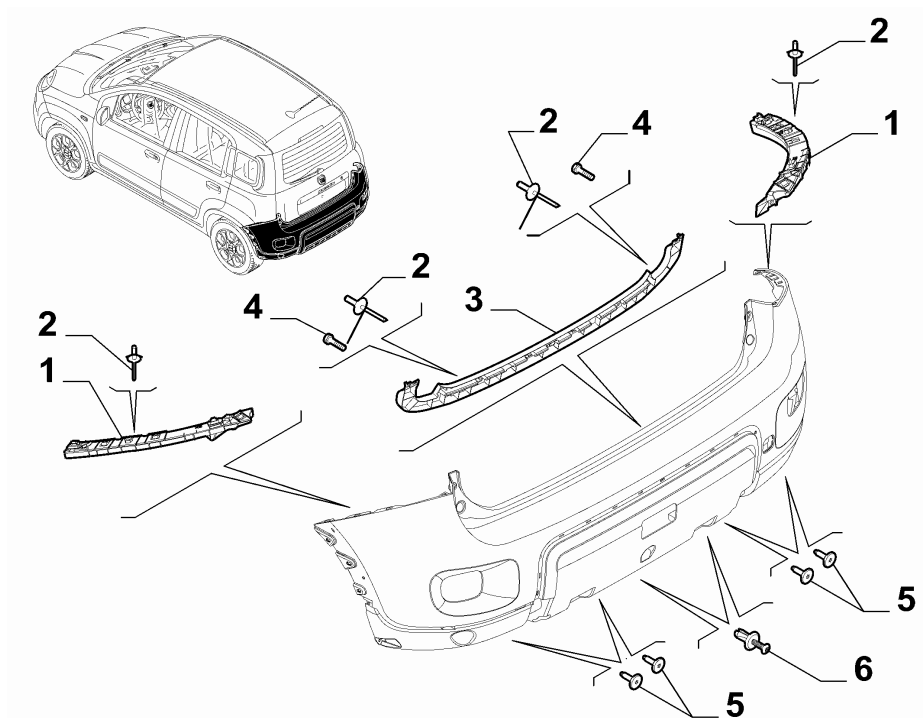
| | Part # | Description | Modification | Compatibility | Notes | Qty | Sub |
|---|-----------|-----------------------|--------------|----------------|-------------|-----|-----|
| 1 | 96525561 | REAR BUMPER | | 508 | WITH PRIMER | 1 | |
| 1 | 96525562 | REAR BUMPER | | 508 | WITH PRIMER | 1 | |
| 2 | 51881126 | PROTECTION | | LL4, 508 | | 1 | |
| 2 | 51882584 | PROTECTION | | LL4, 508 | | 1 | |
| 2 | 735557270 | PROTECTION | | TC2V, LL5, 508 | | 1 | |
| 2 | 735557278 | PROTECTION | | TC2V, LL5, 508 | | 1 | |
| 3 | 51881122 | MOULDING RIGHT SIDE | | | | 1 | |
| 3 | 51881123 | MOULDING SIDE LEFT | | | | 1 | |
| 4 | 51881127 | MOULDING IBOTTO RIGHT | | | | 1 | |
| 4 | 51881128 | MOULDING BOTTOM LEFT | | | | 1 | |
| 5 | 735555189 | PLUG | | LL4, TC2V, LL5 | | 1 | |
| 5 | 735537018 | PLUG | | TCVAN, LL5 | | 1 | |
| 6 | 51961182 | ADHESIVE SET | | | | 1 | |

| Legend | Notes |
|--------|---------------------|
| 508 | PARKING SENSOR |
| LL4 | TREKKING |
| LL5 | 4X4 |
| TC2V | BN W/ REAR END DOOR |
| TCPAN | VIEW |
| TCVAN | VAN |

OUTER ACCESSORIES

70727-020 - REAR BUMPER - 1

Catalogue 33 - NUOVA PANDA (2012-....)
 Group [707] OUTER ACCESSORIES
 Table [70727-020] REAR BUMPER
 Variant 1
 Revision 0
 Modifications
 Valid for

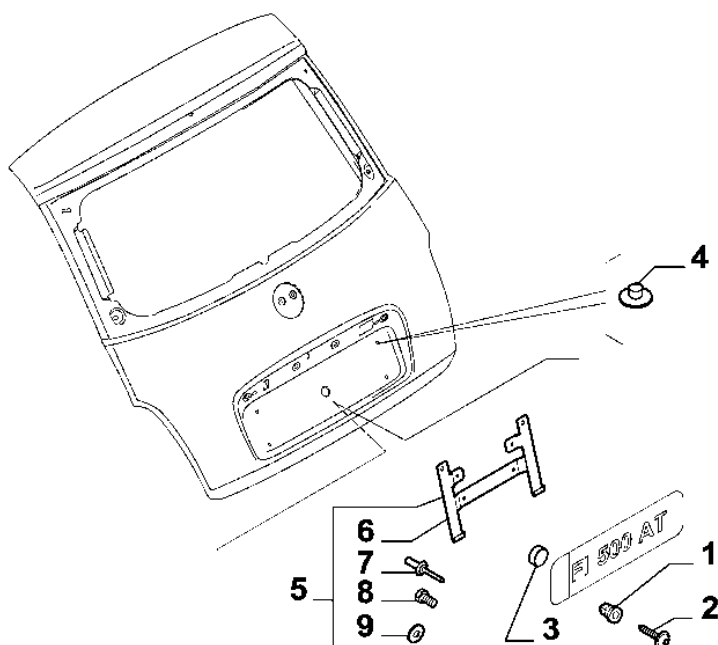


| | Part # | Description | Modification | Compatibility | Notes | Qty | Sub |
|---|----------|---------------|--------------|---------------|-------|-----|-----|
| 1 | 51880539 | BRACKET LEFT | | | | 1 | |
| 1 | 51880537 | BRACKET RIGHT | | | | 1 | |
| 2 | 51756626 | RIVET | | | | 6 | |
| 3 | 51880611 | BRACKET | | | | 1 | |
| 4 | 15534509 | SCREW | | | | 2 | |
| 5 | 51827981 | SCREW | | | | 4 | |
| 6 | 51877375 | BUTTON | | | | 2 | |

OUTER ACCESSORIES

70727-040 - REAR BUMPER - 1

Catalogue 33 - NUOVA PANDA (2012-....)
 Group [707] OUTER ACCESSORIES
 Table [70727-040] REAR BUMPER
 Variant 1
 Revision 0
 Modifications
 Valid for

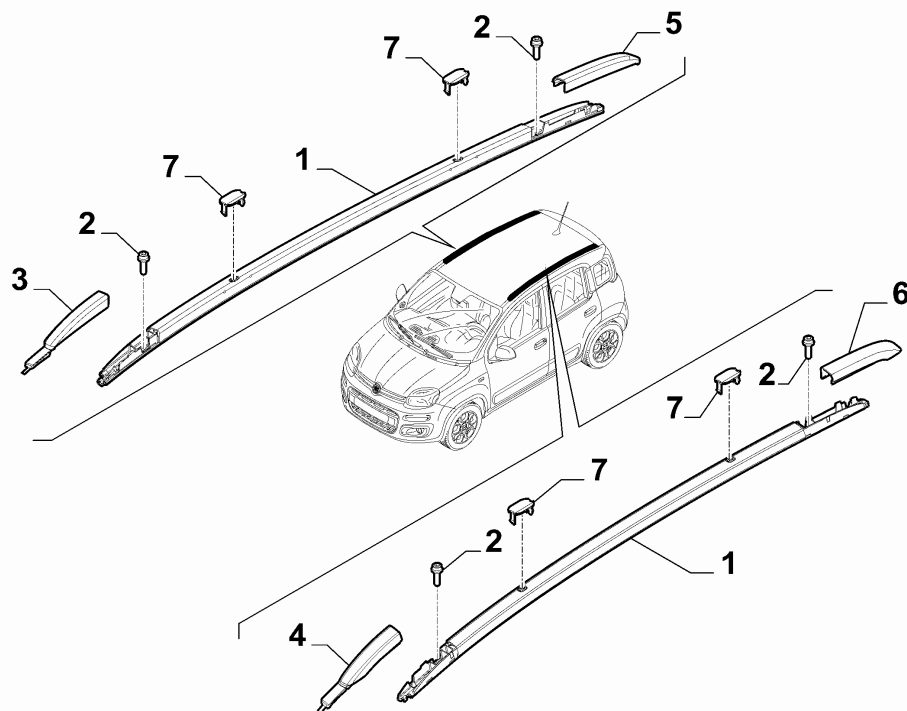


| | Part # | Description | Modification | Compatibility | Notes | Qty | Sub |
|--------|----------|----------------------|--------------|---------------|----------------|-----|-----|
| 1 | 5757553 | PAD | | AM00, AM87 | | 4 | |
| 2 | 15687970 | SCREW | | AM00, AM87 | | 4 | |
| 3 | 46791333 | SPACER | | | | 1 | |
| 4 | 4362124 | PLUG | | AM26 | | 4 | |
| 5 | 51754425 | PLATE SUPPORT | | AM26 | WITH FASTENERS | 1 | |
| 6 | 46471515 | PLATE SUPPORT | | AM26 | | 1 | |
| 7 | 14415790 | RIVET | | AM26 | | 4 | |
| 8 | 13275914 | SCREW M6X10 | | AM26 | | 2 | |
| 9 | 12646604 | PLANE WASHER 6X15 | | AM26 | | 2 | |
| Legend | | Notes | | | | | |
| AM00 | | ITALY/CENTRAL EUROPE | | | | | |
| AM26 | | JAPAN | | | | | |
| AM87 | | UK/EIRE | | | | | |

OUTER ACCESSORIES

70732-020 - EXTERNAL ACCESSORIES - 1

Catalogue 33 - NUOVA PANDA (2012-....)
 Group [707] OUTER ACCESSORIES
 Table [70732-020] EXTERNAL ACCESSORIES
 Variant 1
 Revision 0
 Modifications
 Valid for

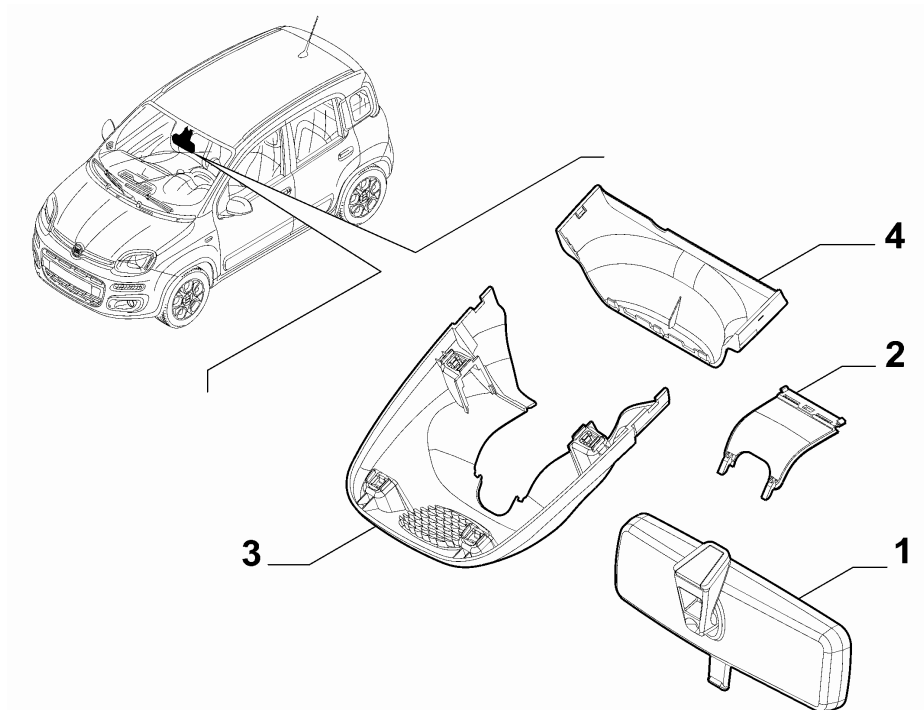


| | Part # | Description | Modification | Compatibility | Notes | Qty | Sub |
|--------|---|------------------|--------------|---------------|-------|-----|-----|
| 1 | 735557039 | BAR RIGHT | C15768 | 357 | | 1 | |
| 1 | 735557044 | BAR LEFT | C15768 | 357 | | 1 | |
| 1 | 735558514 | BAR RIGHT | D15768 | 357 | | 1 | |
| 1 | 735558515 | BAR LEFT | D15768 | 357 | | 1 | |
| 2 | 51906158 | SCREW | | 357 | | 4 | |
| 3 | 735558516 | BOOT FRONT RIGHT | | 357 | | 1 | |
| 4 | 735558521 | BOOT FRONT LEFT | | 357 | | 1 | |
| 5 | 735558522 | BOOT REAR RIGHT | | 357 | | 1 | |
| 6 | 735558523 | BOOT REAR LEFT | | 357 | | 1 | |
| 7 | 735558527 | PLUG | | 357 | | 4 | |
| Legend | | Notes | | | | | |
| 15768 | New coloring of roof bars and relevant plugs [DAT 12/03/2012] | | | | | | |
| 357 | ROOF RAILS FOR RACKS | | | | | | |

OUTER ACCESSORIES

70740-010 - REARVIEW MIRRORS - 1

Catalogue 33 - NUOVA PANDA (2012-....)
 Group [707] OUTER ACCESSORIES
 Table [70740-010] REARVIEW MIRRORS
 Variant 1
 Revision 0
 Modifications
 Valid for



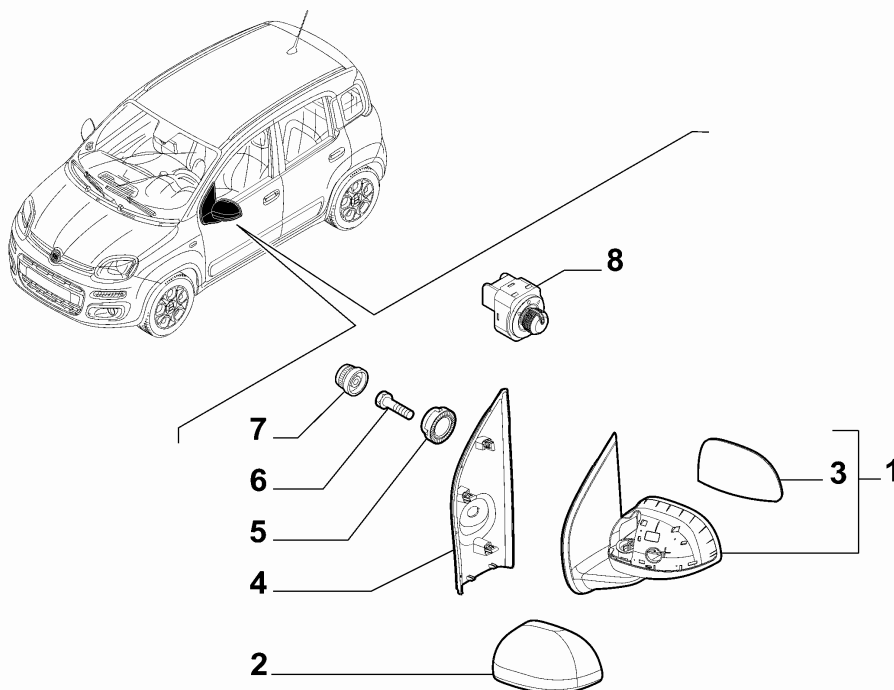
| | Part # | Description | Modification | Compatibility | Notes | Qty | Sub |
|--------|-----------|------------------|--------------|---------------|-------|-----|-----|
| 1 | 735420429 | REAR VIEW MIRROR | | 6DC | | 1 | |
| 1 | 735591837 | REAR VIEW MIRROR | | 6DC | | 1 | |
| 2 | 735564141 | ORNAMENT | | 6DC | | 1 | |
| 3 | 735564142 | ORNAMENT | | 6DC | | 1 | |
| 4 | 735564143 | ORNAMENT | | 6DC | | 1 | |
| Legend | | Notes | | | | | |

6DC LOW SPEED COLLISION MITIGATION (LSCM)

OUTER ACCESSORIES

70740-020 - REARVIEW MIRRORS - 1

Catalogue 33 - NUOVA PANDA (2012-....)
 Group [707] OUTER ACCESSORIES
 Table [70740-020] REARVIEW MIRRORS
 Variant 1
 Revision 0
 Modifications
 Valid for



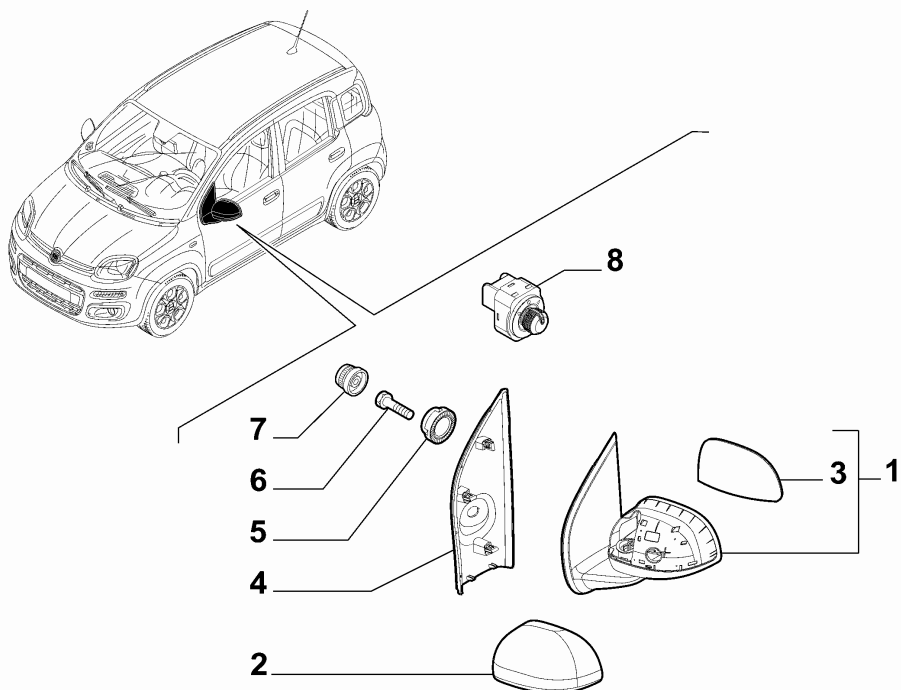
| | Part # | Description | Modification | Compatibility | Notes | Qty | Sub |
|---|-----------|------------------------|--------------|---|--------------------|-----|-----|
| 1 | 735536792 | REAR VIEW MIRROR RIGHT | C17174 | GSX, 043, 5BY | | 1 | |
| 1 | 735594377 | REAR VIEW MIRROR RIGHT | D17174 | GSX, 043, 5BY | | 1 | |
| 1 | 735547945 | REAR VIEW MIRROR RIGHT | C17174 | GSX, 043, 5BY | | 1 | |
| 1 | 735594382 | REAR VIEW MIRROR RIGHT | D17174 | GSX, 043, 5BY | | 1 | |
| 1 | 735536793 | REAR VIEW MIRROR RIGHT | C17174 | GSX, 041, 5BY | | 1 | |
| 1 | 735594378 | REAR VIEW MIRROR RIGHT | D17174 | GSX, 041, 5BY | | 1 | |
| 1 | 735536794 | REAR VIEW MIRROR RIGHT | C17174 | GSX, 041, 5BY | | 1 | |
| 1 | 735594379 | REAR VIEW MIRROR RIGHT | D17174 | GSX, 041, 5BY | | 1 | |
| 1 | 735536795 | REAR VIEW MIRROR RIGHT | C17174 | GDX, 043 | | 1 | |
| 1 | 735594380 | REAR VIEW MIRROR RIGHT | D17174 | GDX, 043 | | 1 | |
| 1 | 735536796 | REAR VIEW MIRROR RIGHT | C17174 | GDX, 041 | | 1 | |
| 1 | 735594381 | REAR VIEW MIRROR RIGHT | D17174 | GDX, 041 | | 1 | |
| 1 | 735536787 | REAR VIEW MIRROR LEFT | C17174 | GSX, 043 | | 1 | |
| 1 | 735594383 | REAR VIEW MIRROR LEFT | D17174 | GSX, 043 | | 1 | |
| 1 | 735536788 | REAR VIEW MIRROR LEFT | C17174 | GSX, 041 | | 1 | |
| 1 | 735594385 | REAR VIEW MIRROR LEFT | D17174 | GSX, 041 | | 1 | |
| 1 | 735536789 | REAR VIEW MIRROR LEFT | C17174 | GDX, 043, 5BY | | 1 | |
| 1 | 735594386 | REAR VIEW MIRROR LEFT | D17174 | GDX, 043, 5BY | | 1 | |
| 1 | 735548175 | REAR VIEW MIRROR LEFT | C17174 | GDX, 043, 5BY | | 1 | |
| 1 | 735594384 | REAR VIEW MIRROR LEFT | D17174 | GDX, 043, 5BY | | 1 | |
| 1 | 735536790 | REAR VIEW MIRROR LEFT | C17174 | GDX, 041, 5BY | | 1 | |
| 1 | 735594387 | REAR VIEW MIRROR LEFT | D17174 | GDX, 041, 5BY | | 1 | |
| 1 | 735536791 | REAR VIEW MIRROR LEFT | C17174 | GDX, 041, 5BY | | 1 | |
| 1 | 735594388 | REAR VIEW MIRROR LEFT | D17174 | GDX, 041, 5BY | | 1 | |
| 2 | 735536797 | CAP RIGHT | | 5J8, 4YD | BLACK | 1 | |
| 2 | 735576520 | CAP RIGHT | | 5J8, 4YD, 5B2, 5CA, 5CB, 5CF, 5CG, 5CJ, 5CK, 5CC, 5CE, 5DP, 5CD, 5DN, 4EZ | SUPPLIED W/ PRIMER | 1 | |
| 2 | 735536798 | CAP LEFT | | 5J8, 4YD | BLACK | 1 | |

OUTER ACCESSORIES

Continued...

70740-020 - REARVIEW MIRRORS - 1

Catalogue 33 - NUOVA PANDA (2012-....)
 Group [707] OUTER ACCESSORIES
 Table [70740-020] REARVIEW MIRRORS
 Variant 1
 Revision 0
 Modifications
 Valid for



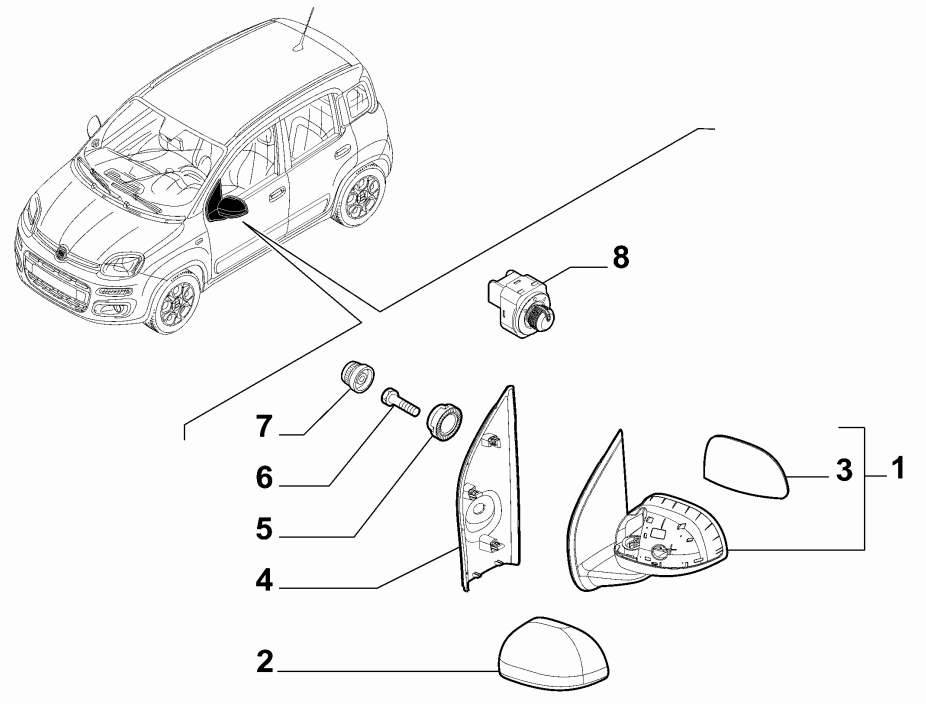
| | Part # | Description | Modification | Compatibility | Notes | Qty | Sub |
|---|-----------|----------------|--------------|---|--------------------|-----|-----|
| 2 | 735576536 | CAP LEFT | | 5J8, 4YD, 5B2, 5CA, 5CB, 5CF, 5CG, 5CJ, 5CK, 5CC, 5CE, 5DP, 5CD, 5DN, 4EZ | SUPPLIED W/ PRIMER | 1 | |
| 3 | 71754720 | GLASS RIGHT | | 043 | | 1 | |
| 3 | 71775772 | GLASS RIGHT | | 041 | | 1 | |
| 3 | 71754719 | GLASS LEFT | | 043 | | 1 | |
| 3 | 71775773 | GLASS LEFT | | 041 | | 1 | |
| 4 | 735535699 | ORNAMENT RIGHT | | 043 | | 1 | |
| 4 | 735535700 | ORNAMENT RIGHT | | GSX, 041 | | 1 | |
| 4 | 735535701 | ORNAMENT RIGHT | | GDX, 041 | | 1 | |
| 4 | 735535702 | ORNAMENT LEFT | | 043 | | 1 | |
| 4 | 735535703 | ORNAMENT LEFT | | GSX, 041 | | 1 | |
| 4 | 735535704 | ORNAMENT LEFT | | GDX, 041 | | 1 | |
| 5 | 5955331 | PLUG | | 043 | | 1 | |
| 6 | 15699804 | SCREW | | 041 | | 4 | |
| 6 | 15699804 | SCREW | | 043 | | 8 | |
| 7 | 735363882 | BOOT | | 043 | | 1 | |
| 8 | 735536755 | SWITCH | C16793 | 041 | | 1 | |
| 8 | 735585361 | SWITCH | D16793 | 041 | | 1 | |

| Legend | Notes |
|--------|---|
| 16793 | Reduction of wing mirror switch actuating load [DAT 09/05/2013] |
| 17174 | Nuovo specchio retrovisore esterno [DAT 17/04/2014] |
| 041 | ELECTRICALLY ADJUSTABLE WING MIRRORS WITH DEMISTER |
| 043 | EXTERNAL REARVIEW MIRRORS WITH MECHANICAL CONTROL |
| 4EZ | SPECIAL SERIES 1 |
| 4YD | SPECIFIC EXTERNAL REARVIEW MIRROR CAP |
| 5B2 | PASTEL PAINT FOR A CHARGE |
| 5BY | OUTSIDE TEMPERATURE SENSOR |
| 5CA | PASTEL PAINT 1 |
| 5CB | PASTEL PAINT 2 |

Continued...

70740-020 - REARVIEW MIRRORS - 1

Catalogue 33 - NUOVA PANDA (2012-....)
Group [707] OUTER ACCESSORIES
Table [70740-020] REARVIEW MIRRORS
Variant 1
Revision 0
Modifications
Valid for



| Legend | Notes |
|--------|---|
| 5CC | METALLIC PAINT 1 |
| 5CD | METALLIC PAINT 2 |
| 5CE | METALLIC PAINT 3 |
| 5CF | PASTEL PAINT EXTRA SERIES 1 |
| 5CG | PASTEL PAINT EXTRA SERIES 2 |
| 5CJ | PASTEL PAINT EXTRA SERIES 4 |
| 5CK | PASTEL PAINT EXTRA SERIES 5 |
| 5DN | METALLIC PAINT 4 |
| 5DP | METALLIC PAINT 5 |
| 5J8 | SPECIFIC EXTERNAL REARVIEW MIRROR CAP 2 |
| GDX | RIGHT |
| GSX | LEFT |

OUTER ACCESSORIES

70743-010 - BOARD DOCUMENTATION - 1

Catalogue 33 - NUOVA PANDA (2012-....)
 Group [707] OUTER ACCESSORIES
 Table [70743-010] BOARD DOCUMENTATION
 Variant 1
 Revision 0
 Modifications
 Valid for TC2V



| | Part # | Description | Modification | Compatibility | Notes | Qty | Sub |
|---|----------|-------------|----------------|---------------|-------|-----|-----|
| 1 | 60381702 | BOOK | C15855 | 850 | | 1 | |
| 1 | 60381703 | BOOK | C15855 | 851 | | 1 | |
| 1 | 60381704 | BOOK | C15855 | 852 | | 1 | |
| 1 | 60381705 | BOOK | C15855 | 853 | | 1 | |
| 1 | 60381706 | BOOK | C15855 | 856 | | 1 | |
| 1 | 60381707 | BOOK | C15855 | 898 | | 1 | |
| 1 | 60399153 | BOOK | D15855, C16264 | 850 | | 1 | |
| 1 | 60399154 | BOOK | D15855, C16264 | 851 | | 1 | |
| 1 | 60399155 | BOOK | D15855, C16264 | 852 | | 1 | |
| 1 | 60399156 | BOOK | D15855, C16264 | 853 | | 1 | |
| 1 | 60399157 | BOOK | D15855, C16264 | 856 | | 1 | |
| 1 | 60399158 | BOOK | D15855, C16264 | 898 | | 1 | |
| 1 | 60399247 | BOOK | D16264, C16590 | 850 | | 1 | |
| 1 | 60399304 | BOOK | D16590, C17478 | 850 | | 1 | |
| 1 | 60399526 | BOOK | D17478 | 850 | | 1 | |
| 1 | 60399248 | BOOK | D16264, C16590 | 851 | | 1 | |
| 1 | 60399305 | BOOK | D16590, C17478 | 851 | | 1 | |
| 1 | 60399527 | BOOK | D17478 | 851 | | 1 | |
| 1 | 60399249 | BOOK | D16264, C16590 | 852 | | 1 | |
| 1 | 60399306 | BOOK | D16590, C17478 | 852 | | 1 | |
| 1 | 60399528 | BOOK | D17478 | 852 | | 1 | |
| 1 | 60399250 | BOOK | D16264, C16590 | 853 | | 1 | |
| 1 | 60399307 | BOOK | D16590, C17478 | 853 | | 1 | |
| 1 | 60399529 | BOOK | D17478 | 853 | | 1 | |
| 1 | 60399251 | BOOK | D16264, C16590 | 856 | | 1 | |
| 1 | 60399308 | BOOK | D16590, C17478 | 856 | | 1 | |
| 1 | 60399530 | BOOK | D17478 | 856 | | 1 | |
| 1 | 60399252 | BOOK | D16264, C16590 | 898 | | 1 | |
| 1 | 60399309 | BOOK | D16590, C17478 | 898 | | 1 | |
| 1 | 60399531 | BOOK | D17478 | 898 | | 1 | |
| 2 | 60383795 | PORTFOLIO | | | | 1 | |

Continued...

OUTER ACCESSORIES

70743-010 - BOARD DOCUMENTATION - 1

Catalogue 33 - NUOVA PANDA (2012-....)
 Group [707] OUTER ACCESSORIES
 Table [70743-010] BOARD DOCUMENTATION
 Variant 1
 Revision 0
 Modifications
 Valid for TC2V



| | Part # | Description | Modification | Compatibility | Notes | Qty | Sub |
|---|----------|----------------------|----------------|---------------|-------|-----|-----|
| 3 | 60395345 | BOOK FIAT ASSISTENZA | C15362 | 850 | | 1 | |
| 3 | 53007000 | BOOK FIAT ASSISTENZA | D15362 | 850 | | 1 | |
| 3 | 60395346 | BOOK FIAT ASSISTENZA | C15362 | 850, 851, 853 | | 1 | |
| 3 | 53007001 | BOOK FIAT ASSISTENZA | D15362, C17243 | 5VR | | 1 | |
| 3 | 53007740 | BOOK FIAT ASSISTENZA | D17243 | 5VR | | 1 | |
| 3 | 60395347 | BOOK FIAT ASSISTENZA | C15362 | 853 | | 1 | |
| 3 | 53007002 | BOOK FIAT ASSISTENZA | D15362 | 853 | | 1 | |
| 3 | 53007268 | BOOK FIAT ASSISTENZA | | 851 | | 1 | |
| 3 | 60395349 | BOOK FIAT ASSISTENZA | C15362 | 856 | | 1 | |
| 3 | 53007010 | BOOK FIAT ASSISTENZA | D15362 | 856 | | 1 | |
| 3 | 60395402 | BOOK FIAT ASSISTENZA | C15362 | 858 | | 1 | |
| 3 | 53007012 | BOOK FIAT ASSISTENZA | D15362 | 858 | | 1 | |
| 3 | 60395405 | BOOK FIAT ASSISTENZA | C15362 | 898 | | 1 | |
| 3 | 53007009 | BOOK FIAT ASSISTENZA | D15362 | 898 | | 1 | |
| 3 | 60395417 | BOOK FIAT ASSISTENZA | C15362 | 5KA | | 1 | |
| 3 | 53007011 | BOOK FIAT ASSISTENZA | D15362, C17029 | 5KA | | 1 | |
| 3 | 53007489 | BOOK FIAT ASSISTENZA | D17029 | 5KA | | 1 | |
| 3 | 60395399 | BOOK FIAT ASSISTENZA | C16278 | 852 | | 1 | |
| 3 | 60395957 | BOOK FIAT ASSISTENZA | D16278, C17028 | 852 | | 1 | |
| 3 | 53007461 | BOOK FIAT ASSISTENZA | D17028 | 852 | | 1 | |

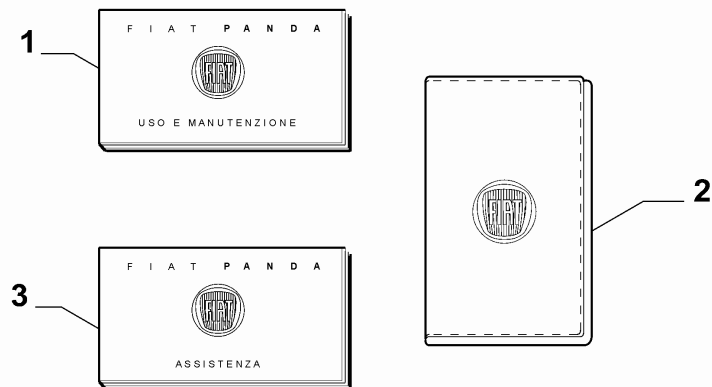
OUTER ACCESSORIES

| Legend | Notes |
|--------|---|
| 15362 | NEW WARRANTY BOOKLET [DAT 26/04/2012] [DAT 08/05/2012] |
| 15855 | New Owner Handbooks for TwinAir 65 HP engine addition [DAT 20/03/2012] |
| 16264 | New Owner Handbooks for addition of inserts for sliding seats, heated seats and traction plus [DAT 21/11/2012] [DAT 11/01/2013] |
| 16278 | new English language warranty booklet [DAT 23/03/2012] |
| 16590 | New Owner Handbook [DAT 18/01/2013] |
| 17028 | New warranty booklet for the UK market [DAT 07/10/2013] |
| 17029 | New warranty booklet for the Netherlands market [DAT 31/01/2014] |
| 17243 | Nuovo libretto mercato Svizzera per mobilità "Elite" [DAT 04/04/2014] |
| 17478 | New Owner Handbooks [DAT 13/05/2014] |
| 5KA | GUIDE IN DUTCH |

Continued...

70743-010 - BOARD DOCUMENTATION - 1

| | |
|---------------|---------------------------------|
| Catalogue | 33 - NUOVA PANDA (2012-....) |
| Group | [707] OUTER ACCESSORIES |
| Table | [70743-010] BOARD DOCUMENTATION |
| Variant | 1 |
| Revision | 0 |
| Modifications | |
| Valid for | TC2V |



| Legend | Notes |
|--------|-----------------------|
| 5VR | GUIDE FOR SWITZERLAND |
| 850 | GUIDE IN ITALIAN |
| 851 | GUIDE IN FRENCH |
| 852 | GUIDE IN ENGLISH |
| 853 | GUIDE IN GERMAN |
| 856 | GUIDE IN SPANISH |
| 858 | GUIDE IN POLISH |
| 898 | GUIDE IN PORTUGUESE |
| TC2V | BN W/ REAR END DOOR |

OUTER ACCESSORIES

70743-010 - BOARD DOCUMENTATION - 2

Catalogue 33 - NUOVA PANDA (2012-....)
 Group [707] OUTER ACCESSORIES
 Table [70743-010] BOARD DOCUMENTATION
 Variant 2
 Revision 0
 Modifications
 Valid for TCVAN,TCPAN



| | Part # | Description | Modification | Compatibility | Notes | Qty | Sub |
|---|----------|-------------|----------------|---------------|-------|-----|-----|
| 1 | 60381702 | BOOK | C15855 | 850 | | 1 | |
| 1 | 60381703 | BOOK | C15855 | 851 | | 1 | |
| 1 | 60381705 | BOOK | C15855 | 853 | | 1 | |
| 1 | 60381706 | BOOK | C15855 | 856 | | 1 | |
| 1 | 60381707 | BOOK | C15855 | 898 | | 1 | |
| 1 | 60399153 | BOOK | D15855, C16264 | 850 | | 1 | |
| 1 | 60399154 | BOOK | D15855, C16264 | 851 | | 1 | |
| 1 | 60399156 | BOOK | D15855, C16264 | 853 | | 1 | |
| 1 | 60399157 | BOOK | D15855, C16264 | 856 | | 1 | |
| 1 | 60399158 | BOOK | D15855, C16264 | 898 | | 1 | |
| 1 | 60399247 | BOOK | D16264, C16590 | 850 | | 1 | |
| 1 | 60399304 | BOOK | D16590, C17478 | 850 | | 1 | |
| 1 | 60399526 | BOOK | D17478 | 850 | | 1 | |
| 1 | 60399248 | BOOK | D16264, C16590 | 851 | | 1 | |
| 1 | 60399305 | BOOK | D16590, C17478 | 851 | | 1 | |
| 1 | 60399527 | BOOK | D17478 | 851 | | 1 | |
| 1 | 60399250 | BOOK | D16264, C16590 | 853 | | 1 | |
| 1 | 60399307 | BOOK | D16590, C17478 | 853 | | 1 | |
| 1 | 60399529 | BOOK | D17478 | 853 | | 1 | |
| 1 | 60399251 | BOOK | D16264, C16590 | 856 | | 1 | |
| 1 | 60399308 | BOOK | D16590, C17478 | 856 | | 1 | |
| 1 | 60399530 | BOOK | D17478 | 856 | | 1 | |
| 1 | 60399252 | BOOK | D16264, C16590 | 898 | | 1 | |
| 1 | 60399309 | BOOK | D16590, C17478 | 898 | | 1 | |
| 1 | 60399531 | BOOK | D17478 | 898 | | 1 | |
| 2 | 60383795 | PORTFOLIO | | | | 1 | |
| 3 | 53007006 | BOOK | | 850 | | 1 | |
| 3 | 53007008 | BOOK | | 853 | | 1 | |
| 3 | 53007017 | BOOK | C15894 | 5KA | | 1 | |
| 3 | 53007490 | BOOK | D15894 | 5KA | | 1 | |
| 3 | 53007018 | BOOK | | 856 | | 1 | |

Continued...

OUTER ACCESSORIES

70743-010 - BOARD DOCUMENTATION - 2

Catalogue 33 - NUOVA PANDA (2012-....)
 Group [707] OUTER ACCESSORIES
 Table [70743-010] BOARD DOCUMENTATION
 Variant 2
 Revision 0
 Modifications
 Valid for TCVAN,TCPAN

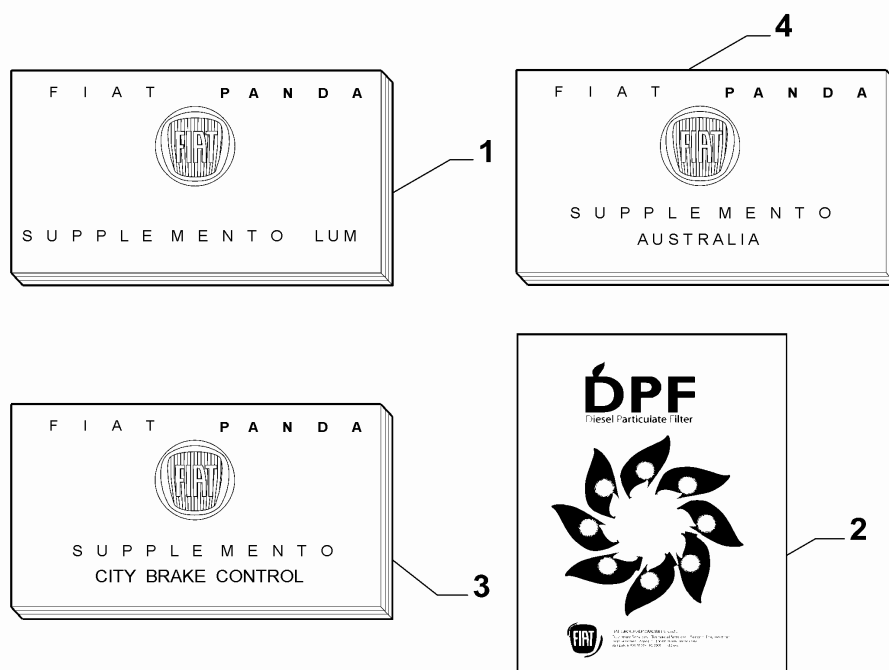


| | Part # | Description | Modification | Compatibility | Notes | Qty | Sub |
|--------|---|-------------|--------------|---------------|-------|-----|-----|
| 3 | 53007019 | BOOK | | 898 | | 1 | |
| 3 | 53007020 | BOOK | | 4GA | | 1 | |
| 3 | 60395358 | BOOK | C17024 | 851 | | 1 | |
| 3 | 53007275 | BOOK | D17024 | 851 | | 1 | |
| Legend | | Notes | | | | | |
| 15855 | New Owner Handbooks for TwinAir 65 HP engine addition [DAT 20/03/2012] | | | | | | |
| 15894 | ADOPTION OF NEW WARRANTY BOOKLET [DAT 31/01/2014] | | | | | | |
| 16264 | New Owner Handbooks for addition of inserts for sliding seats, heated seats and traction plus [DAT 21/11/2012] [DAT 11/01/2013] | | | | | | |
| 16590 | New Owner Handbook [DAT 18/01/2013] | | | | | | |
| 17024 | New warranty booklet for the French market [DAT 31/01/2014] | | | | | | |
| 17478 | New Owner Handbooks [DAT 13/05/2014] | | | | | | |
| 4GA | POLISH LANGUAGE CUSTOM. | | | | | | |
| 5KA | GUIDE IN DUTCH | | | | | | |
| 850 | GUIDE IN ITALIAN | | | | | | |
| 851 | GUIDE IN FRENCH | | | | | | |
| 853 | GUIDE IN GERMAN | | | | | | |
| 856 | GUIDE IN SPANISH | | | | | | |
| 898 | GUIDE IN PORTUGUESE | | | | | | |
| TCPAN | VIEW | | | | | | |
| TCVAN | VAN | | | | | | |

OUTER ACCESSORIES

70743-020 - BOARD DOCUMENTATION - 1

Catalogue 33 - NUOVA PANDA (2012-....)
 Group [707] OUTER ACCESSORIES
 Table [70743-020] BOARD DOCUMENTATION
 Variant 1
 Revision 0
 Modifications
 Valid for



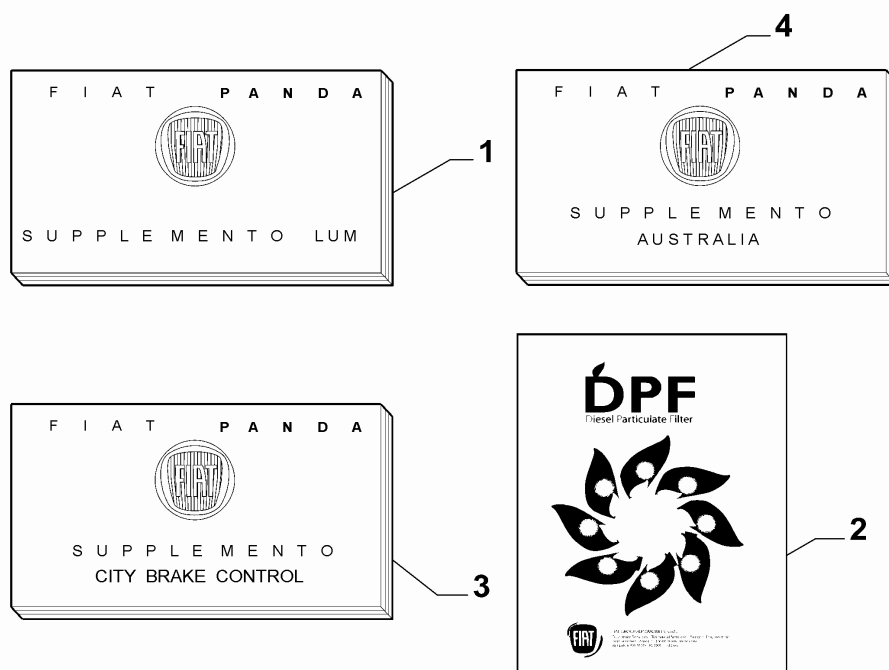
| | Part # | Description | Modification | Compatibility | Notes | Qty | Sub |
|---|----------|-------------|----------------|-----------------------|-------|-----|-----|
| 1 | 60397687 | SUPPLEMENT | C17478 | 407, 850 | | 1 | |
| 1 | 53007847 | SUPPLEMENT | D17478 | 407, 850 | | 1 | |
| 1 | 60397688 | SUPPLEMENT | C17478 | 407, 851 | | 1 | |
| 1 | 53007848 | SUPPLEMENT | D17478 | 407, 851 | | 1 | |
| 1 | 60397689 | SUPPLEMENT | C17478 | 407, 852 | | 1 | |
| 1 | 53007849 | SUPPLEMENT | D17478 | 407, 852 | | 1 | |
| 1 | 60397690 | SUPPLEMENT | C17478 | 407, 853 | | 1 | |
| 1 | 53007850 | SUPPLEMENT | D17478 | 407, 853 | | 1 | |
| 1 | 60397691 | SUPPLEMENT | C17478 | 407, 856 | | 1 | |
| 1 | 53007851 | SUPPLEMENT | D17478 | 407, 856 | | 1 | |
| 1 | 60397692 | SUPPLEMENT | C17478 | 407, 898 | | 1 | |
| 1 | 53007852 | SUPPLEMENT | D17478 | 407, 898 | | 1 | |
| 1 | 60395810 | SUPPLEMENT | C15699 | TCVAN | | 1 | |
| 1 | 60395937 | SUPPLEMENT | D15699, C17478 | TCVAN, TCPAN | | 1 | |
| 1 | 53007846 | SUPPLEMENT | D17478 | TCVAN, TCPAN | | 1 | |
| 1 | 60397702 | SUPPLEMENT | C17027 | CMBBG, 850, ECOCF5 | | 1 | |
| 1 | 53007408 | SUPPLEMENT | D17027, C17138 | CMBBG, 850, ECOCF5 | | 1 | |
| 1 | 53007717 | SUPPLEMENT | D17138 | CMBBG, 850, ECOCF6 | | 1 | |
| 1 | 60397703 | SUPPLEMENT | C17027 | CMBBG, 851, ECOCF5 | | 1 | |
| 1 | 53007409 | SUPPLEMENT | D17027, C17138 | CMBBG, 851, ECOCF5 | | 1 | |
| 1 | 53007718 | SUPPLEMENT | D17138 | CMBBG, 851, ECOCF5 | | 1 | |
| 1 | 60397704 | SUPPLEMENT | C17027 | CMBBG, 852, ECOCF5 | | 1 | |
| 1 | 53007410 | SUPPLEMENT | D17027, C17138 | CMBBG, 852, ECOCF5 | | 1 | |

Continued...

OUTER ACCESSORIES

70743-020 - BOARD DOCUMENTATION - 1

Catalogue 33 - NUOVA PANDA (2012-....)
 Group [707] OUTER ACCESSORIES
 Table [70743-020] BOARD DOCUMENTATION
 Variant 1
 Revision 0
 Modifications
 Valid for



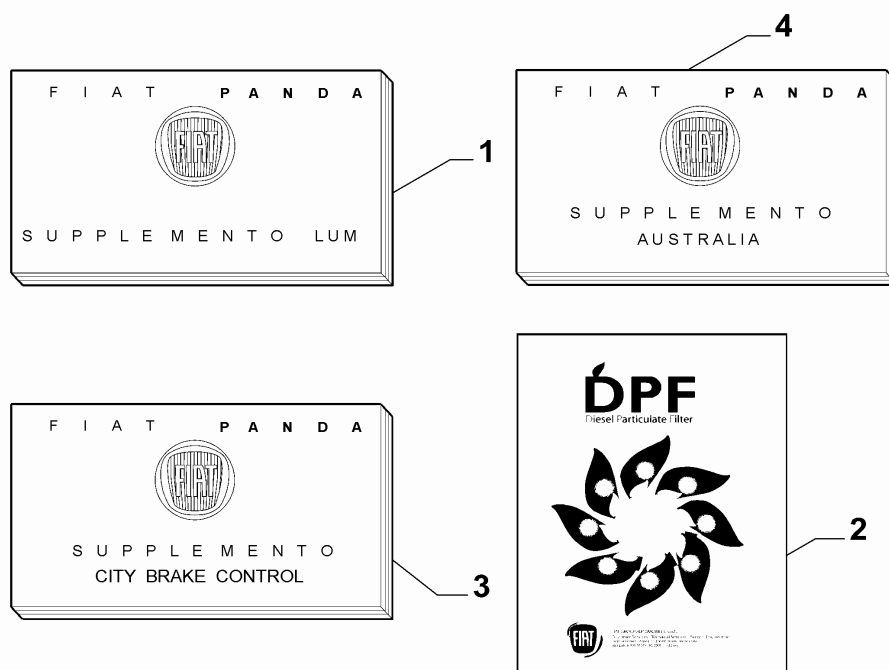
| | Part # | Description | Modification | Compatibility | Notes | Qty | Sub |
|---|----------|-------------|----------------|-----------------------|-------|-----|-----|
| 1 | 53007719 | SUPPLEMENT | D17138 | CMBBG, 852, ECOCF6 | | 1 | |
| 1 | 60397705 | SUPPLEMENT | C17027 | CMBBG, 853, ECOCF5 | | 1 | |
| 1 | 53007411 | SUPPLEMENT | D17027, C17138 | CMBBG, 853, ECOCF5 | | 1 | |
| 1 | 53007720 | SUPPLEMENT | D17138 | CMBBG, 853, ECOCF6 | | 1 | |
| 1 | 60397706 | SUPPLEMENT | C17027 | CMBBG, 856, ECOCF5 | | 1 | |
| 1 | 53007412 | SUPPLEMENT | D17027, C17138 | CMBBG, 856, ECOCF5 | | 1 | |
| 1 | 53007721 | SUPPLEMENT | D17138 | CMBBG, 856, ECOCF6 | | 1 | |
| 1 | 60397707 | SUPPLEMENT | C17027 | CMBBG, 898, ECOCF5 | | 1 | |
| 1 | 53007413 | SUPPLEMENT | D17027, C17138 | CMBBG, 898, ECOCF5 | | 1 | |
| 1 | 53007722 | SUPPLEMENT | D17138 | CMBBG, 898, ECOCF6 | | 1 | |
| 1 | 53007054 | SUPPLEMENT | C16315 | TT4X4, 850 | | 1 | |
| 1 | 53007087 | SUPPLEMENT | D16315, C15479 | TT4X4, 850 | | 1 | |
| 1 | 53007254 | SUPPLEMENT | D15479, C17478 | TT4X4, 850 | | 1 | |
| 1 | 53007853 | SUPPLEMENT | D17478 | TT4X4, 850 | | 1 | |
| 1 | 53007055 | SUPPLEMENT | C16315 | TT4X4, 851 | | 1 | |
| 1 | 53007088 | SUPPLEMENT | D16315, C15479 | TT4X4, 851 | | 1 | |
| 1 | 53007255 | SUPPLEMENT | D15479, C17478 | TT4X4, 851 | | 1 | |
| 1 | 53007854 | SUPPLEMENT | D17478 | TT4X4, 851 | | 1 | |
| 1 | 53007056 | SUPPLEMENT | C16315 | TT4X4, 852 | | 1 | |
| 1 | 53007089 | SUPPLEMENT | D16315, C15479 | TT4X4, 852 | | 1 | |
| 1 | 53007256 | SUPPLEMENT | D15479, C17478 | TT4X4, 852 | | 1 | |

Continued...

OUTER ACCESSORIES

70743-020 - BOARD DOCUMENTATION - 1

Catalogue 33 - NUOVA PANDA (2012-....)
 Group [707] OUTER ACCESSORIES
 Table [70743-020] BOARD DOCUMENTATION
 Variant 1
 Revision 0
 Modifications
 Valid for



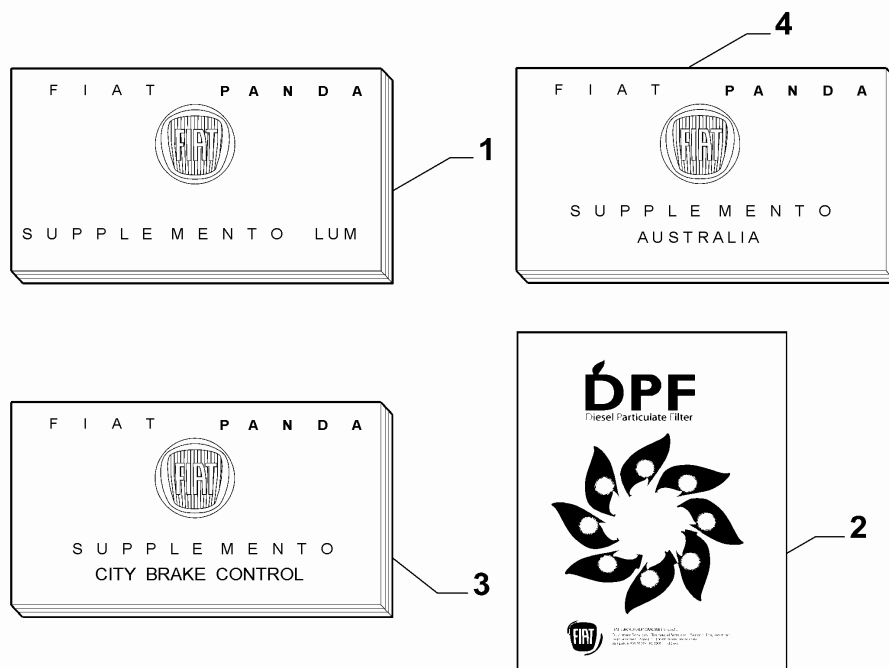
| | Part # | Description | Modification | Compatibility | Notes | Qty | Sub |
|---|----------|-------------|----------------|---------------|-------|-----|-----|
| 1 | 53007855 | SUPPLEMENT | D17478 | TT4X4, 852 | | 1 | |
| 1 | 53007057 | SUPPLEMENT | C16315 | TT4X4, 853 | | 1 | |
| 1 | 53007090 | SUPPLEMENT | D16315, C15479 | TT4X4, 853 | | 1 | |
| 1 | 53007257 | SUPPLEMENT | D15479, C17478 | TT4X4, 853 | | 1 | |
| 1 | 53007856 | SUPPLEMENT | D17478 | TT4X4, 853 | | 1 | |
| 1 | 53007058 | SUPPLEMENT | C16315 | TT4X4, 856 | | 1 | |
| 1 | 53007091 | SUPPLEMENT | D16315, C15479 | TT4X4, 856 | | 1 | |
| 1 | 53007258 | SUPPLEMENT | D15479, C17478 | TT4X4, 856 | | 1 | |
| 1 | 53007857 | SUPPLEMENT | D17478 | TT4X4, 856 | | 1 | |
| 1 | 53007059 | SUPPLEMENT | C16315 | TT4X4, 898 | | 1 | |
| 1 | 53007092 | SUPPLEMENT | D16315, C15479 | TT4X4, 898 | | 1 | |
| 1 | 53007259 | SUPPLEMENT | D15479, C17478 | TT4X4, 898 | | 1 | |
| 1 | 53007858 | SUPPLEMENT | D17478 | TT4X4, 898 | | 1 | |
| 1 | 60397695 | SUPPLEMENT | C17192 | CMBBM, 850 | | 1 | |
| 1 | 53007260 | SUPPLEMENT | D17192, C17015 | CMBBM, 850 | | 1 | |
| 1 | 53007747 | SUPPLEMENT | D17015 | CMBBM, 850 | | 1 | |
| 1 | 60397696 | SUPPLEMENT | C17015 | CMBBM, 851 | | 1 | |
| 1 | 53007748 | SUPPLEMENT | D17015 | CMBBM, 851 | | 1 | |
| 1 | 60397697 | SUPPLEMENT | C17015 | CMBBM, 852 | | 1 | |
| 1 | 53007749 | SUPPLEMENT | D17015 | CMBBM, 852 | | 1 | |
| 1 | 60397698 | SUPPLEMENT | C17015 | CMBBM, 853 | | 1 | |
| 1 | 53007750 | SUPPLEMENT | D17015 | CMBBM, 853 | | 1 | |
| 1 | 60397699 | SUPPLEMENT | C17015 | CMBBM, 856 | | 1 | |
| 1 | 53007751 | SUPPLEMENT | D17015 | CMBBM, 856 | | 1 | |
| 1 | 60397700 | SUPPLEMENT | C17015 | CMBBM, 898 | | 1 | |
| 1 | 53007752 | SUPPLEMENT | D17015 | CMBBM, 898 | | 1 | |
| 1 | 53007464 | SUPPLEMENT | C17478 | ECOCF6 | | 1 | |
| 1 | 53007193 | SUPPLEMENT | | 4MF | | 1 | |
| 1 | 53007154 | SUPPLEMENT | | 193 | | 1 | |
| 1 | 53007699 | SUPPLEMENT | D16590, C17478 | 4M6 | | 1 | |
| 1 | 53007724 | SUPPLEMENT | C17478 | 7JE | | 1 | |

Continued...

OUTER ACCESSORIES

70743-020 - BOARD DOCUMENTATION - 1

Catalogue 33 - NUOVA PANDA (2012-....)
 Group [707] OUTER ACCESSORIES
 Table [70743-020] BOARD DOCUMENTATION
 Variant 1
 Revision 0
 Modifications
 Valid for



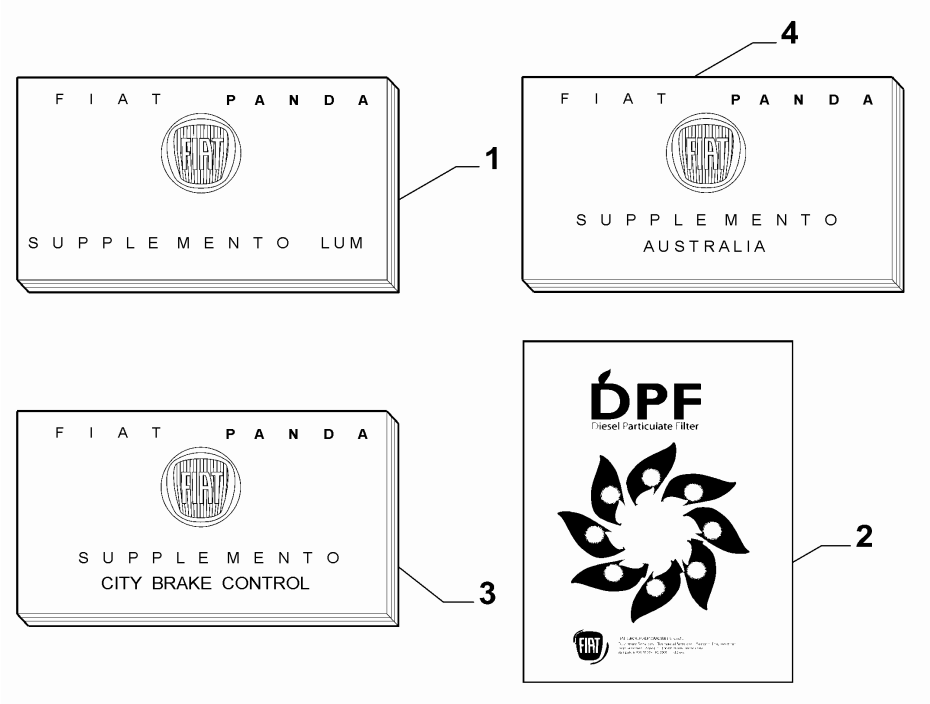
| | Part # | Description | Modification | Compatibility | Notes | Qty | Sub |
|--------|----------|--|--------------|----------------|-------|-----|-----|
| 2 | 60397574 | SUPPLEMENT | | | | 1 | |
| 3 | 53007149 | SUPPLEMENT | C16590 | 6DC | | 1 | |
| 4 | 53007280 | SUPPLEMENT | | AM87, 019, 852 | | 1 | |
| Legend | | Notes | | | | | |
| 15479 | | INTRODUCTION OF TIRES THAT CAN BE FITTED WITH CHAINS [DAT 10/05/2013] | | | | | |
| 15699 | | NEW OWNER HANDBOOK SUPPLEMENT FOR VAN PAN, FOLLOWING TWINAIR 0.9 65HP ENGINE ADDITION [DAT 30/04/2012] | | | | | |
| 16315 | | New Owner Handbook supplement for addition of CC0.9 85 HP turbo engine on 4x4 [VET 3094261] | | | | | |
| 16590 | | New Owner Handbook [DAT 18/01/2013] | | | | | |
| 17015 | | NEW OWNER HANDBOOK SUPPLEMENTS [DAT 28/02/2014] | | | | | |
| 17027 | | NEW LUM [DAT 18/10/2013] | | | | | |
| 17138 | | Nuovo supplemento L.U.M CF6 [DAT 28/02/2014] | | | | | |
| 17192 | | Nuovo supplemento [DAT 31/10/2013] | | | | | |
| 17478 | | New Owner Handbooks [DAT 13/05/2014] | | | | | |
| 019 | | TYPE-APPROVAL ADJUSTMENTS | | | | | |
| 193 | | EOBD WARNING LIGHT CUT-OUT | | | | | |
| 407 | | SELESPEED (ROBOTIZED GEARBOX CONTROL) | | | | | |
| 4M6 | | PASSENGER SIDE SUN VISOR WITH MIRROR | | | | | |
| 4MF | | FUEL TANK EXTRA SERIES 2 | | | | | |
| 6DC | | LOW SPEED COLLISION MITIGATION (LSCM) | | | | | |
| 7JE | | REDUCTION OF CARBON DIOXIDE 4 | | | | | |
| 850 | | GUIDE IN ITALIAN | | | | | |
| 851 | | GUIDE IN FRENCH | | | | | |
| 852 | | GUIDE IN ENGLISH | | | | | |
| 853 | | GUIDE IN GERMAN | | | | | |
| 856 | | GUIDE IN SPANISH | | | | | |
| 898 | | GUIDE IN PORTUGUESE | | | | | |
| AM87 | | UK/EIRE | | | | | |
| CMBBG | | GASOLINE / LPG | | | | | |
| CMBBM | | PETROL/METHANE | | | | | |
| ECOCF5 | | EURO 5 | | | | | |
| ECOCF6 | | EEC LIM. STAGE 6 | | | | | |

OUTER ACCESSORIES

Continued...

70743-020 - BOARD DOCUMENTATION - 1

| | |
|---------------|---------------------------------|
| Catalogue | 33 - NUOVA PANDA (2012-....) |
| Group | [707] OUTER ACCESSORIES |
| Table | [70743-020] BOARD DOCUMENTATION |
| Variant | 1 |
| Revision | 0 |
| Modifications | |
| Valid for | |

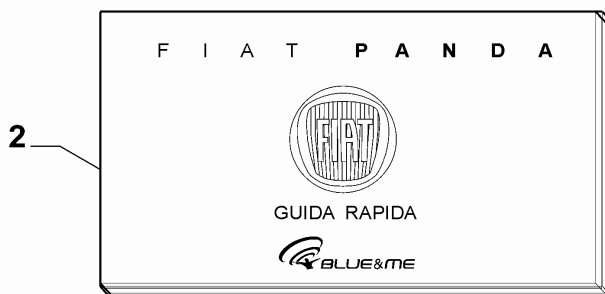


| Legend | Notes |
|--------|----------------|
| TCPAN | VIEW |
| TCVAN | VAN |
| TT4X4 | 4 DRIVE WHEELS |

OUTER ACCESSORIES

70743-030 - BOARD DOCUMENTATION - 1

Catalogue 33 - NUOVA PANDA (2012-....)
 Group [707] OUTER ACCESSORIES
 Table [70743-030] BOARD DOCUMENTATION
 Variant 1
 Revision 0
 Modifications
 Valid for



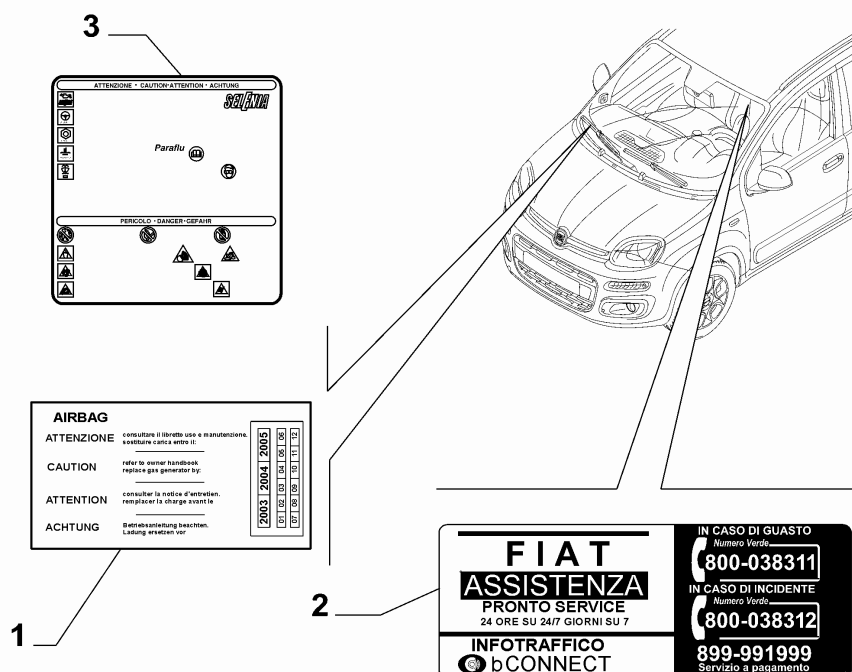
| | Part # | Description | Modification | Compatibility | Notes | Qty | Sub |
|--------|----------|-------------|--------------|---|-------|-----|-----|
| 1 | 60397716 | SUPPLEMENT | | 6RR, 850 | | 1 | |
| 1 | 60397717 | SUPPLEMENT | | 6RR, 851 | | 1 | |
| 1 | 60397718 | SUPPLEMENT | | 6RR, 852 | | 1 | |
| 1 | 60397719 | SUPPLEMENT | | 6RR, 853 | | 1 | |
| 1 | 60397720 | SUPPLEMENT | | 6RR, 856 | | 1 | |
| 1 | 60397721 | SUPPLEMENT | | 6RR, 898 | | 1 | |
| 2 | 60395637 | SUPPLEMENT | | 6RR, 850, 851, 852, 853, 856, 898 | | 1 | |
| 2 | 60395638 | SUPPLEMENT | | 6RR, 850, 851, 852, 853, 856, 898 | | 1 | |
| 2 | 60395639 | SUPPLEMENT | | 6RR, 850, 851, 852, 853, 856, 898 | | 1 | |
| 2 | 60395640 | SUPPLEMENT | | 6RR, 850, 851, 852, 853, 856, 898 | | 1 | |
| 2 | 60395641 | SUPPLEMENT | | 6RR, 850, 851, 852, 853, 856, 898 | | 1 | |
| 2 | 60395642 | SUPPLEMENT | | 6RR, 850, 851, 852, 853, 856, 898 | | 1 | |
| Legend | | Notes | | | | | |

6RR BLUE&ME 2 WITH USB PORT AND AUX SOCKET
 850 GUIDE IN ITALIAN
 851 GUIDE IN FRENCH
 852 GUIDE IN ENGLISH
 853 GUIDE IN GERMAN
 856 GUIDE IN SPANISH
 898 GUIDE IN PORTUGUESE

OUTER ACCESSORIES

70750-010 - PRESCRIPTION AND INFORMATION NAME PLATE - 1

Catalogue 33 - NUOVA PANDA (2012-....)
 Group [707] OUTER ACCESSORIES
 Table [70750-010] PRESCRIPTION AND INFORMATION NAME PLATE
 Variant 1
 Revision 0
 Modifications
 Valid for

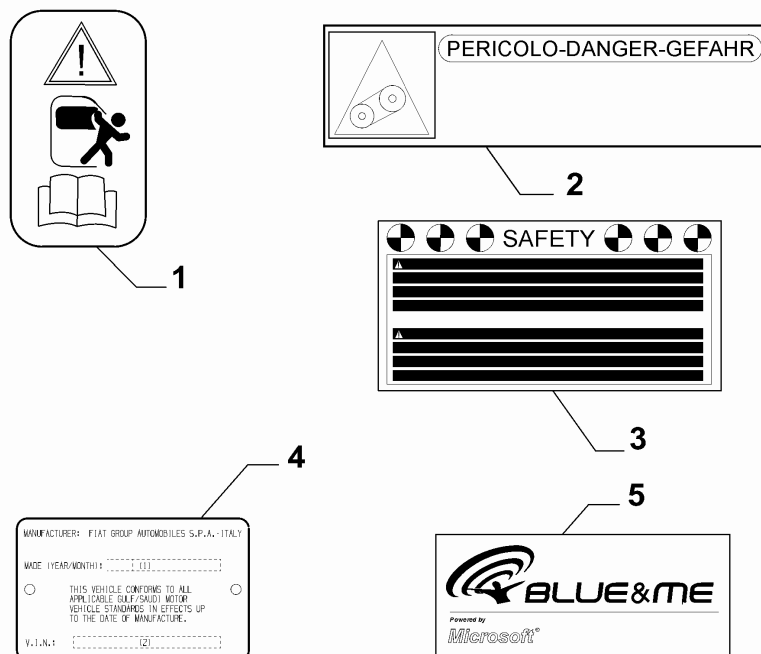


| | Part # | Description | Modification | Compatibility | Notes | Qty | Sub |
|--------|----------|------------------|--------------|---------------|-------|-----|-----|
| 1 | 11178190 | PLATE | | | | 1 | |
| 2 | 11294170 | PLATE | | 850 | | 1 | |
| 3 | 10455190 | PLATE | | CC1.2, LL0 | | 1 | |
| Legend | | Notes | | | | | |
| 850 | | GUIDE IN ITALIAN | | | | | |
| CC1.2 | | 8V.LE 69HP | | | | | |
| LL0 | | NAKED | | | | | |

OUTER ACCESSORIES

70750-010 - PRESCRIPTION AND INFORMATION NAME PLATE - 2

Catalogue 33 - NUOVA PANDA (2012-....)
 Group [707] OUTER ACCESSORIES
 Table [70750-010] PRESCRIPTION AND INFORMATION NAME PLATE
 Variant 2
 Revision 0
 Modifications
 Valid for



| | Part # | Description | Modification | Compatibility | Notes | Qty | Sub |
|--------|----------|-------------|--------------|---------------|-------|-----|-----|
| 1 | 10899680 | PLATE | | | | 2 | |
| 2 | 51853677 | PLATE | | 5DE | | 1 | |
| 3 | 51925039 | PLATE | | | | 1 | |
| 4 | 11178190 | PLATE | | | | 1 | |
| 5 | 51849597 | PLATE | | 6RR | | 1 | |
| Legend | | Notes | | | | | |

5DE STOP&START
 6RR BLUE&ME 2 WITH USB PORT AND AUX SOCKET

OUTER ACCESSORIES