



HEADLAMP ALIGNMENT CORRECTOR

HEADLIGHT ALIGNMENT ADJUSTMENT - DESCRIPTION

The adjustment of the orientation of the headlamp light beam according to the load is carried out by means of a regulating device (located inside the headlamps), which tilts them appropriately, lowering the light beam if the vehicle is heavily laden and raising it if the load lessens.

The headlamp alignment correction system works with the ignition key in the ON position and the main beam headlamps switched on.

Two buttons on the left-hand control panel allow the headlamp alignment to be adjusted each time a significant change of load takes place that requires headlamp alignment adjustment.

The relay that controls the activation of the main-beam headlamps also supplies the adjustment motor built into the headlamps; this relay is located in the junction unit under the dashboard and is controlled by the Body Computer.

The instrument panel display shows the position in relation to the adjustment set.

The circuit is protected by a dedicated fuse also located in the junction unit under the dashboard.

HEADLIGHT ALIGNMENT ADJUSTMENT - FUNCTIONAL DESCRIPTION

The main-beam headlights activation signal is sent to pin 2 of connector B of the M001 Body Computer from the H005 steering column switch unit.

See E2011 DIPPED HEADLAMPS

Headlamp alignment adjustment is controlled by two specific buttons on the H091 left-hand control panel.

Pin 4 of the H091 control panel, which allows for headlamp alignment adjustment, is connected to pin 14 of the E050 instrument panel. Reference earth (pin 2) is received from the C022 central dashboard earth.

The M001 Body Computer controls the power supply to the main-beam headlamps and the headlamp alignment adjustment motor by sending an earth signal to relay T01 of the B002 junction unit under the dashboard, thus closing the contact and supplying the main-beam headlamps and the left (F010) and right (F011) headlamp alignment adjustment motors (pin 11 of both headlamps).

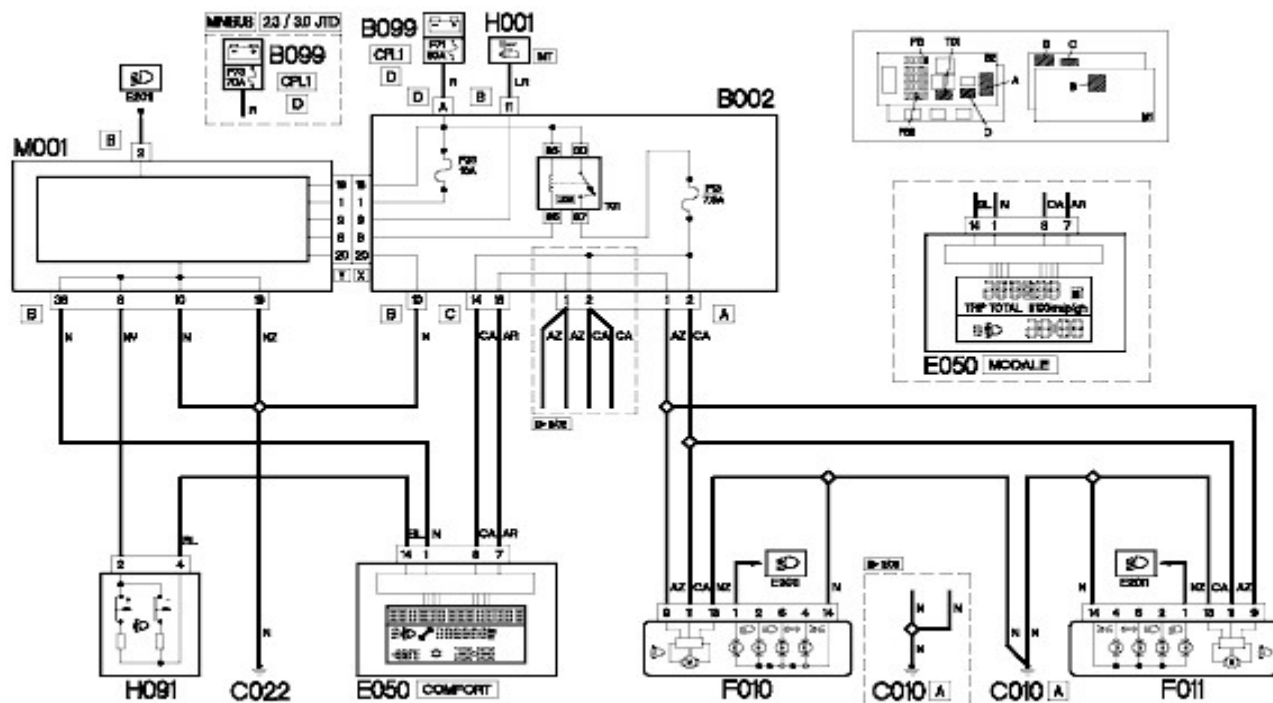
This power supply line is protected by fuse F13 located in the B002 junction unit under the dashboard.

Pin 8 of the E050 instrument panel receives the signal allowing the activation of the main beam headlamps, pin 7 sends the command that operates the headlamp alignment adjustment motors built into the headlamps (pin 9 of both headlamps) via a line entering pin 18 of connector C of the B002 junction unit under the dashboard and leaving pin 1 of connector A of the same.

The headlamp alignment correction system can only be activated with the ignition key in the ON position.

The headlamp alignment motors of both headlamps are connected, at the respective pin 13, to the C010 front left earth.

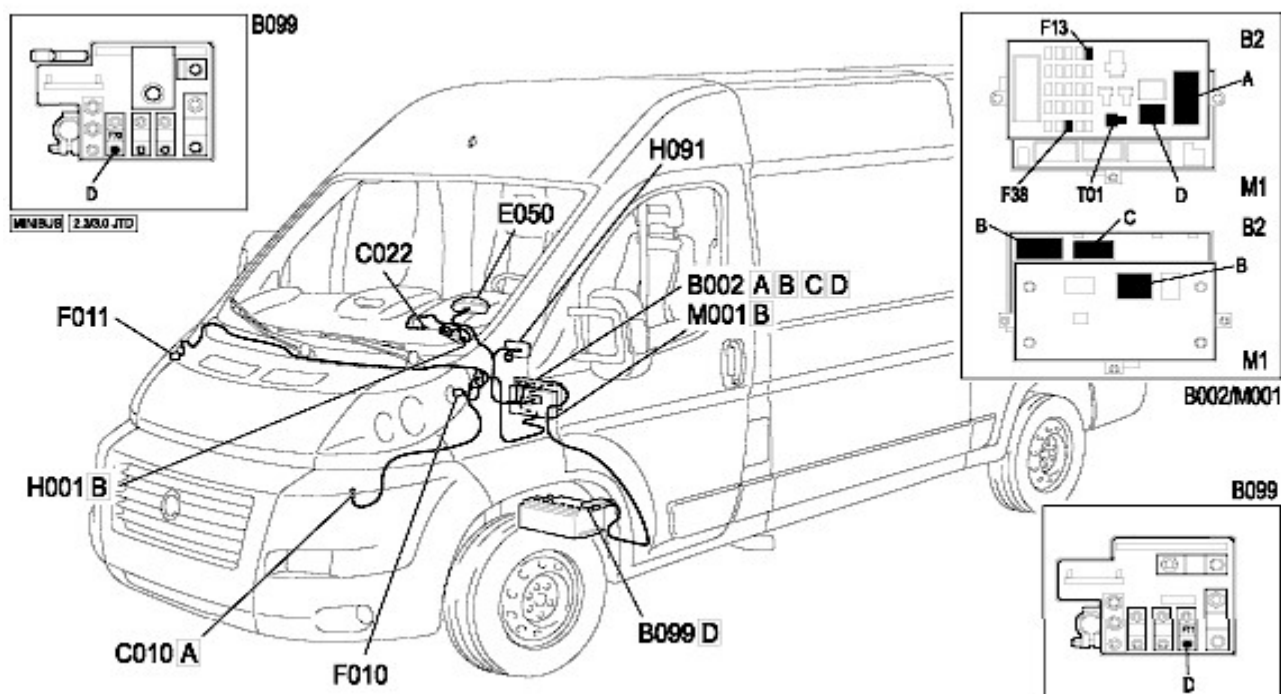
HEADLIGHT ALIGNMENT ADJUSTMENT - WIRING DIAGRAM



Component code	Description
B002	JUNCTION UNIT UNDER DASHBOARD
B099	MAXI FUSE BOX ON BATTERY
C010	LEFT FRONT EARTH
C022	Centre dashboard earth
E050	INSTRUMENT PANEL
F010	LEFT HEADLAMP
F011	RIGHT HEADLAMP
H001	IGNITION SWITCH
H091	LEFT CONTROL UNIT (PCS, LEFT CONTROL PANEL)
M001	BODY COMPUTER

With reference to the assembly
Op. 5505A MULTI-FUNCTION COMPONENTS
Op. 5530B BATTERY AND LEADS
-
-
Op. 5560B ANALOGUE CONTROL PANEL
Op. 5540B HEADLAMPS
Op. 5540B HEADLAMPS
Op. 5520A IGNITION SWITCH
Op. 7040A PASSENGER COMPARTMENT TRIMS
Op. 5505A MULTI-FUNCTION COMPONENTS

HEADLIGHT ALIGNMENT ADJUSTMENT - COMPONENT LOCATION



Component code	Description
B002	JUNCTION UNIT UNDER DASHBOARD
B099	MAXI FUSE BOX ON BATTERY
C010	LEFT FRONT EARTH
C022	Centre dashboard earth
E050	INSTRUMENT PANEL
F010	LEFT HEADLAMP
F011	RIGHT HEADLAMP
H001	IGNITION SWITCH
H091	LEFT CONTROL UNIT (PCS, LEFT CONTROL PANEL)
M001	BODY COMPUTER

With reference to the assembly
Op. 5505A MULTI-FUNCTION COMPONENTS
Op. 5530B BATTERY AND LEADS
-
-
Op. 5560B ANALOGUE CONTROL PANEL
Op. 5540B HEADLAMPS
Op. 5540B HEADLAMPS
Op. 5520A IGNITION SWITCH
Op. 7040A PASSENGER COMPARTMENT TRIMS
Op. 5505A MULTI-FUNCTION COMPONENTS